



*caring about you & your environment*

**Report 01.401**

19 June 2001

File: E/6/18/3

Report 2001.Env01401.JB.mem

Report to Environment Committee  
from Dr Jane Bradbury, Divisional Manager, Environment

## **Divisional Manager's Report**

### **1. Purpose**

To inform the Committee about the activities and progress of the Environment Division and about any matters which have arisen since the Committee's last meeting.

### **2. Managers' Reports**

The Department Managers' reports and the Divisional Accountant's report are attached.

### **3. Information to Motivation: State of the Environment Monitoring Conference**

Although some of us were disappointed by the quality of some of the speakers at this conference, it was good to get an opportunity to discuss how we can better use our information to motivate the community.

Staff who attended the conference are getting together to see what we learned and how we can improve our approach to information dissemination.

### **4. Harbourmaster in demand**

I have agreed that Captain Mike Pryce be appointed as Harbourmaster for Port Taranaki. Taranaki Regional Council's Harbourmaster and Deputy Harbourmaster are employed on a contract basis with the Council. They both work for Port Taranaki. Taranaki Regional Council is concerned that there are some occasions when there could be a conflict of interest and asked that Mike Pryce be appointed Harbourmaster – to act only when there is a potential conflict of interest situation. It is testament to the esteem with which Mike's work is held that he was approached for this position.

## 5. **The Sustainability of Urban Water Systems on the Kapiti Coast: Report by the Parliamentary Commissioner for the Environment.**

The Parliamentary Commissioner for the Environment (PCE) has just released his final report on the sustainability of urban water systems on the Kapiti Coast. The Report was prepared in response to a request from Ngati Raukawa for an inquiry into water supply and water management of the Otaki River. We were given ample opportunity to input into the document at the draft stage.

The Report is very critical of KCDC's water supply planning. It also identifies the need for us to look at groundwater management in the Waikanae/Paraparaumu area. The PCE questions whether our approach to drilling bores and taking groundwater is too permissive.

As Councillors will be aware, we have already identified the significant increases of groundwater over the last few years as a potential problem and have devoted more resources to our monitoring. We shall soon be in a position to decide whether changes to the Regional Freshwater Plan are warranted.

The PCE's report contains two recommendations. The first is for KCDC to develop and implement a long-term water services strategic plan. The second is for KCDC and WRC to investigate opportunities to improve integrated water catchment management planning. Unfortunately, whilst we agree with the intent of this second recommendation, there is very little substance in the report to tell us what the PCE is driving at. The only real criticism seems to be that Te Atiawa ki Whakarongotai do not agree with core aspects of WRC/KCDC Environmental Strategy. (Once again we are not sure what this is referring to but presume it is our floodplain management planning)

The PCE proposes that a workshop be held to explore how the two organisations can better integrate their work. This will provide us with an opportunity to seek clarification and develop a way forward.

Councillors will be aware that the WRC is currently processing consents for KCDC to take water from the Otaki River.

## 6. **Environmental Education**

We are pleased with the way that this work is progressing. Staff have been working very long hours to meet their deadlines and it is exciting to see all the work of the past year coming together.

In addition, Councillors will be aware that there are community care group activities most weekends.

As this is the last meeting of the financial year, I'd like to take this opportunity to thank all the staff who have so willingly given up their leisure time for this work.

7. **Recommendation**

*That the reports from the Divisional Manager, the Departmental Managers and the Divisional Accountant be received.*

Report prepared by:

JANE BRADBURY  
Divisional Manager, Environment

Attach:

# **Regional Policy Statement Implementation Report**

## **Geoff Skene, Manager**

**June 2001**

### **1. Environmental Education Programmes**

It is usual for this report to detail the work that has been done over recent times for the Take Action (Learnwell), Take Charge (Business Bridges), and Take Care (Care Groups) programmes. This month I have not done this as the full year's efforts for these programmes is described in the annual report elsewhere in this Order Paper.

### **2. Regional Policy Statement – Annual Report**

Councillors will recall that for the last five years I have reported on the implementation of the Regional Policy Statement across the Council at this time of the year. This year, however, I have opted to present this report at the next meeting of the Committee. The reason for this is my dissatisfaction with earlier reports which, because of their timing and the fact that they rely on the Order Papers of other Committees, means the last six weeks of activity Council-wide is not adequately reflected in the report.

### **3. Waiwhetu Stream (Tim Porteous)**

The sediment cores have been taken from the lower reaches of the river and are now being analysed.

### **4. Wellington Region Ecological Restoration Network (Nigel Clarke)**

Staff from the Division played a major part in the Network's Restoration Day which was held on May 26 and was for community groups and care groups to meet and share experiences. The day was very successful. We will be able to continue to support the network in the new financial year and see it as a very useful way of keeping our care groups informed and involved in wider restoration issues. We also have plans to provide additional training and support for our groups, including such important aspects as health and safety and engaging the wider community.

### **5. Plant Guide (John Holmes)**

Sales of the Plant Guide have been slow for the last two months. This probably reflects the time of year; other similar publications have experienced the same thing. Consequently we have been looking at other ways of stimulating demand. One of these has been to place an advertisement for the Guide in the recently published "A

Gardener’s Diary for the Wellington Region” (Royal New Zealand Institute of Horticulture). This has a print run of 10,000. As part of this we have received a number of copies of the Diary, which we propose giving to care group members as a small “thank you” for their efforts.

## 6. **Pauatahanui Inlet (Tim Porteous)**

We have commissioned Hill & Knowlton to prepare a communications and education strategy for the Inlet for the next five years. This will identify the target audiences for the Inlet, their information needs, and the most effective ways of raising awareness, educating, or communicating with them. This will be completed by June 30<sup>th</sup>. Tim has also drawn up a draft deed of trust for the proposed Community Trust and discussed this with the Advisory Group.

## 7. **Survey of Environmental Behaviour**

As described in the Councillor’s Information Bulletin, we have been undertaking a survey of the environmental behaviour of Regional residents. The purpose of the survey is to find out what people do, if anything, to look after the environment in their day to day lives, and what they know about pollution and how to prevent it. This will be of great importance to the Council’s environmental education programmes. It will assist us to target our initiatives on the issues that are important and devise more effective methods and strategies for increasing environmental awareness. It will also serve as a baseline so that in years to come we can retest to see if there have been any changes, and whether our programmes are being successful.

The survey will also identify what people perceive as the main environmental issues in the Region, knowledge of the Pollution Hotline, and information demands of our environmental monitoring. It will also provide quantitative information about people’s attitudes towards the marine environment to inform the Council’s approach to marine ecosystems.

The work is being done out by UMR Research Ltd. The survey was carried out between Friday 8<sup>th</sup> and Tuesday 12<sup>th</sup> of June. The results will be available by the end of June, although early results will be available for the Councillors’ workshop on marine ecosystems.

# **Resource Policy Department Report Wayne Hastie Manager**

**May 2001**

## **1. Oceans Policy (Wayne Hastie)**

The Government is preparing an Oceans Policy for New Zealand and has appointed a Ministerial Advisory Committee (MAC) to consult on the first stage of the project – “defining the vision”. Stage two is “designing the vision” and stage three “delivering the vision”.

The MAC is chaired by Dame Catherine Tizard. Regional Councils have been asked to prepare a profile of their marine environment as an introductory brief for the MAC members. They will also assist with the consultation process.

This work coincides with the Council’s own work on marine protection, putting the Council in a good position to input to the Oceans Policy process.

## **2. Regional Plans (Murray McLea)**

As reported to the last meeting, the Council has resolved to proceed with consultation on changing the Transitional Regional Plan so this it is withdrawn altogether. This will require concurrent changes to the Regional Freshwater Plan. Staff advised Ara Tahi of the proposal at its meeting on 2 May.

In terms of timing, it appears that there are a number of other potential regional plan changes “in the pipeline”, and we consider that the best approach is for all changes to be processed together. As a result, the withdrawal of the Transitional Regional Plan will be delayed until later this year.

## **3. Regional Plan Implementation**

### **3.1 Silt Guidelines (Paul Denton)**

As a result of the report we received on silt management we have reviewed our use of the Council’s current silt control guidelines. The guidelines are significantly out of date and inconsistent with the Council’s regional plans. Therefore we have withdrawn the guidelines and commenced work on producing new guidelines. The new guidelines will be substantially based on those prepared by the Auckland Regional Council, who have kindly agreed to waive copyright for the Council. We will be using the Auckland guidelines as a reference document in the interim.

### **3.2 Freshwater Ecosystems (Murray McLea)**

Work on freshwater ecosystems has commenced and is progressing well, with several of the projects near to completion. The five components to the current work programme are:

- A study of whitebait spawning habitats
- A study of freshwater fisheries
- A study of freshwater ecosystem management
- A report on freshwater structures in the Wairarapa
- A study of water races in the Wairarapa

### 3.3 **Marine protection (Paul Denton)**

Work is well advanced on this project and will culminate at the Councillor workshop on 20 June. AC Neilsen have completed the focus group survey of attitudes to the marine environment, but have not yet reported. Additional quantitative information is being obtained separately as part of a broader study of environmental attitudes.

An “experts” workshop has been held to obtain information about current marine issues in the Region. The results will be reported back at the Councillor workshop.

## 4. **Annual Environment Report (Kirsten Forsyth)**

In November last year the Committee received a report on the Annual Environment Report 2000. Since that time staff have reviewed the content and nature of the publication and decided that an alternative approach be followed. Summary information on the environment has been prepared and will be published in the June issue of "Elements". Concurrently this information will be published on the Council's internet site, together with the Annual Resource Reports and a report showing what action has been undertaken or planned as a result of the findings of "Measuring Up".

## 5. **Iwi matters (Keriana Wilcox)**

Progress continues to be made in a number of areas. The second Councillor training workshop is scheduled for 13 June and will continue the focus on the principles of the Treaty of Waitangi. Implementation of the principles by the Council will be the key theme of the workshop.

The following is a summary of current Iwi projects:

- The Wellington Tenth Trust have completed a draft report “GIS Inventory of Maori Heritage Sites and Values in the Port Nicholson Block – Scoping Report”. The final scoping report is due to be completed by 30 June 2001 and will lead on to the substantive project over the next few years.
- A contract is being finalised with Ngati Raukawa for the preparation of a Tikanga Māori report on the Ōtaki River and Catchment.
- An agreement is ready to sign with Te Runanganui o Taranaki Whanui ki te Upoko o Te Ika a Maui to prepare an environmental management plan.

- The Wairarapa officers have prepared a contract with Rangitane for the beautification and protection of an urupa.

## 6. **Hazards (Roz Groves)**

The findings from the two contracted studies for this year are presented as separate reports to the Committee.

## 7. **Staff**

Melanie Dixon has commenced work as a Policy Advisor specialising in wetlands. Mel comes to the Council from Waitakere City Council where she was performing a similar role.



# Resource Investigations Department Report

## John Sherriff, Manager

**June 2001**

### 1. Resource Information

#### 1.1 Flood Warning

Since the last meeting one severe weather bulletin was received:

24 May	Heavy Rain and high winds in the Tararuas
--------	---

The following rainfall alarms was received and responded to:

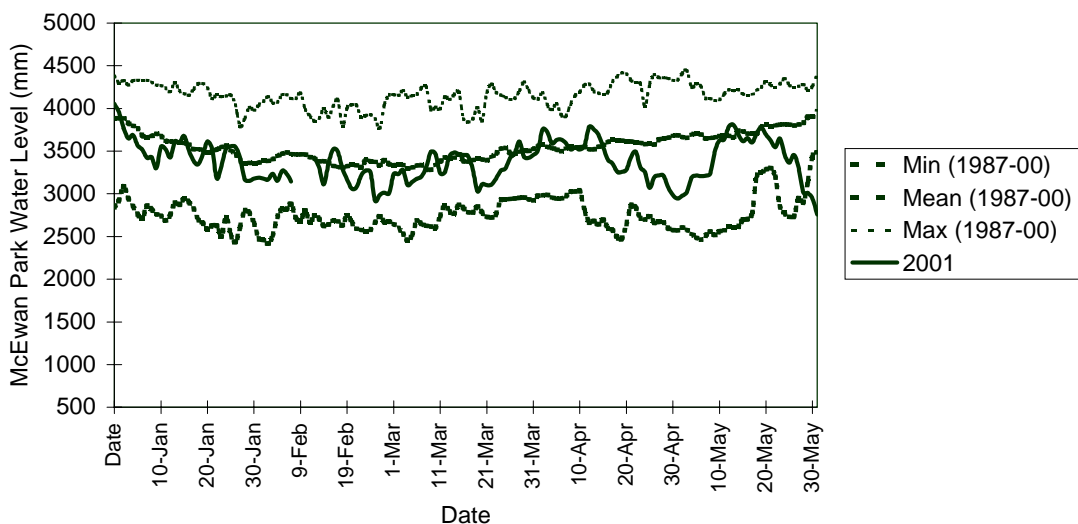
25 May	Rainfall : Oriwa
--------	------------------

### 2. Resource Analysis

#### 2.1 Groundwater Levels

##### *Waiwhetu Artesian Aquifer*

Artesian pressure measured at the McEwan Park monitoring bore has been just below average levels for the first three months of this year. The continuing drought began to have an adverse effect on the artesian pressure in mid April. An increase in river flow during late May saw the situation recover significantly to average or slightly below average levels. The Utility Services Division's use of the Gear Island Pump Station at the end of May caused a marked drop in pressure in the Waiwhetu Aquifer. Although the recent drop in pressure appears alarming, the minimum pressure required to avoid seawater intrusion was maintained at all times.



## ***Kapiti Coast***

Groundwater levels in rainfall recharged aquifers and aquifers in direct connection with rivers and streams have been well below average since January. These low levels are in response to the current drought conditions. Deeper aquifers have been affected to a lesser degree and exhibit slightly below average water levels. The recent rainfall has provided some relief and groundwater levels are beginning to recover.

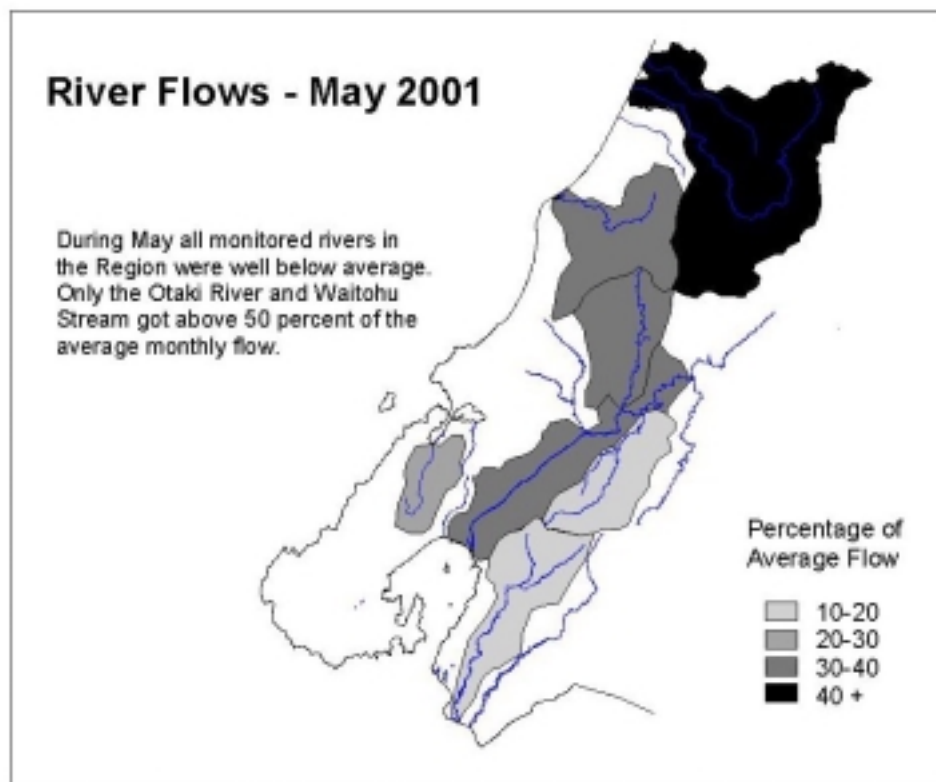
### 2.2 **Rainfall and River Flows**

Despite some rain during May the rainfall received in the Region this year is still well below average.

Wellington received 57 mm of rainfall in May, well below the monthly average of 126 mm. Other areas to receive less than half their average rainfall were Wainuiomata, Hutt Valley, and Mangaroa.

The Kapiti Coast was wetter than in recent months with Waikanae and Otaki receiving rainfall totals around 80 percent of their May averages. Rainfall in the Tararua Ranges was almost back to normal after a very dry April.

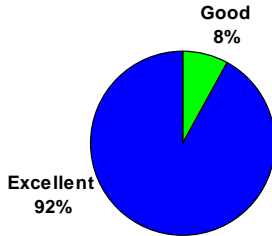
River and stream flows are still low. The Wainuiomata and Mangaroa Rivers were less than 20 percent of their May averages. Only the Otaki River and the Waitohu Stream recorded flows during May that were over 50 percent of average. The following Figure summarises the state of the river flows during May.



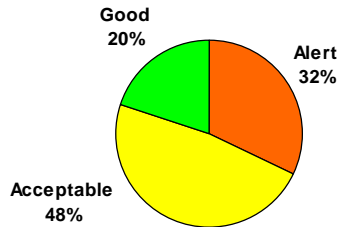
### 2.3 Air Quality Monitoring

The following pie graphs provide a summary of monitoring results at the Birch Street Reserve in Lower Hutt for the past six weeks.

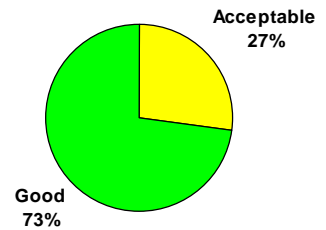
8-hour Average CO Concentration



24-Hour Average NO<sub>2</sub> Concentration

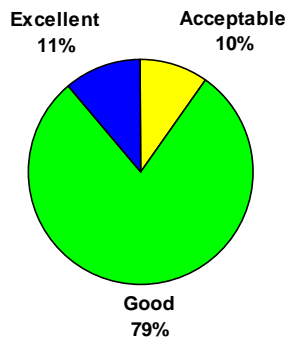


24-Hour Average PM<sub>10</sub> Concentration



We have also been monitoring particulate at the Wainuiomata Bowling Club. The following graph summarises the results at this site over the past six months.

24-Hour Average PM<sub>10</sub> Concentration



The assessment categories are:

Category	Maximum Measured Value	Comment
Action	Exceeds Guideline	Completely unacceptable by national and international standards.
Alert	Between 66% and 100% of the guideline	A warning level which can lead to guidelines being exceeded if trends are not curbed.
Acceptable	Between 33% and 66% of the guideline	A broad category, where maximum values might be of concern in some sensitive locations, but are generally at a level that does not warrant dramatic action.
Good	Between 10% and 33% of the guideline	Peak measurements in this range are unlikely to affect air quality.
Excellent	Less than 10% of the guideline	Of little concern.

### **3. Resource Quality**

#### **3.1 Pollution and Non-compliance Complaints**

A summary of pollution complaints, our performance in responding to them and enforcement action taken is reported separately.

#### **3.2 Enforcement**

##### ***New Zealand Galvanising Ltd.***

We were seeking to prosecute New Zealand Galvanising Ltd for an unauthorised discharge of chromium and zinc into the stormwater and subsequently into Waiwhetu Stream which occurred on 15 August 2000. The matter was heard by the Environment Court on 28 May. New Zealand Galvanising Ltd. pleaded guilty. We are awaiting sentencing details.

##### ***Anglian Water International***

Anglian Water International Ltd (AWI) were charged for the unauthorised discharge of sewage from their sludge de-watering plant on 27 November last year. The matter was also heard by the Environment Court on 28 May. AWI pleaded guilty, and in lieu of a \$20,000 donation to the Council to undertake environmental enhancement works in Owhiro Stream, received no fine. AWI were also ordered to pay \$10,500 costs to the Regional Council.

##### ***Medical Waste Ltd.***

An infringement notice was issued to Medical Waste Ltd. on 1 June 2001. This notice was issued after an offensive and objectionable odour was confirmed from the company's Miramar incinerator on 8 May this year.

#### **3.3 Water Shortage Directions**

On 2 May 2001 a water shortage direction was issued for the Waitohu Stream after its level fell below the minimum flow levels set in the Regional Freshwater Plan. This direction restricted water use to essential public water supply, essential household use (i.e., not including garden watering, car washing or similar activities), and the supply of drinking water for livestock. Irrigation of all land, including the use of sprinklers and hand held hoses, was prohibited.

The water shortage direction had the desired effect; it rained the next day!

### **4. Staffing Matters**

John Bledsoe, Section Leader Resource Quality left the Council of Friday 25 May to pursue other interests. Barry Strong has been appointed as Section Leader and we are currently in the process of filling the two vacancies which currently exist in this Section.

# **Consents Management Department Report**

## **Rob Forlong, Manager**

**June 2001**

### **1. Consent Statistics**

The median time for processing non notified consents is nine working days. The Wellington Office has processed 279 consents so far this financial year.

### **2. Appeals**

The Environment Court cancelled the Proposed Variation to the Upper Hutt District Plan and the consequent Promall resource consents. I've read the decision and the Regional Council consents barely rate a mention. The only thing of note is that the Court did have some concerns about flooding of the carpark and the consequent risks to shoppers.

We continue to keep a watching brief on the appeals against the consents issued for the redevelopment of the Taranaki St Wharf and Frank Kitts Park lagoon area. While none of our consents have been appealed we have been named as a respondent.

The Environment Court also cancelled the Eastern Bays Little Blue Penguin Trust consents. The Court concluded that the bird hospital, rehabilitation area, and café were "inappropriate" in that location (a reclamation at Lowry Bay).

The boatshed appeals are provisionally set down to be heard by the Environment Court in early December 2001.

### **3. Compliance**

#### **3.1 Abatement Notices**

No Abatement Notices have been issued since the last committee meeting.

#### **3.2 Infringement Notices**

Medical Waste Limited received an infringement notice for an alleged offensive and objectionable odour from their plant.

Telstra Saturn received an infringement notice for allegedly beginning work on the undersea cable without providing the required notice and underwater survey documentation.

Chemwaste and their Managing Director received an Infringement Notice for an alleged offensive and objectionable discharge of sawdust from their plant in Seaview.

### 3.3 **Prosecution and Interim Enforcement Orders**

Burrell Demolition Limited has sought leave to appeal the High Court decision to the Court of Appeal. The leave hearing will be on 18 June 2001. We have also had indications that the Company will seek further declarations from the Environment Court.

## 4. **Other**

### 4.1 **Proposed Charging Policy**

The Proposed Resource Management Charging Policy has been through the hearing process and will be reported back to Policy and Finance in due course.

### 4.2 **Staffing**

Kirsty Ferguson has started as a Resource Advisor. Kirsty come to us from Tranzrail where she was their Environmental Manager.

Applicant	Proposal	Date Consent Lodged	Date Submissions Closed	Number of Submissions Received	Pre-hearing Held	Hearing Held	Hearing Committee Members	Date Decision Released	Granted or Declined
ProMall <sup>3</sup>	Consents associated with the development of a new shopping mall. Regional Council consents consist of several bridges, realignment of part of a stream and construction of artificial lakes	05/02/99	25/06/99	250+		13/12/99-17/12/99	Upper Hutt City Councillors	24/12/99	Decision released 23 May 2001. All WRC consents cancelled by the court, along with those consents issued by the Upper Hutt City Council. Significantly, this includes the proposed variation to the UHCC district plan.
Lambton Harbour Management <sup>1</sup>	Consents associated with the development of the Taranaki Street Wharf and Lagoon area	09/04/99	21/05/99	77		04/08/99 05/08/99 06/08/99	Councillor Buchanan, Tony Town (Commissioner)	06/09/99	Granted with conditions. City Council consents are now under appeal

Applicant	Proposal	Date Consent Lodged	Date Submissions Closed	Number of Submissions Received	Pre-hearing Held	Hearing Held	Hearing Committee Members	Date Decision Released	Granted or Declined
GNB Technologies	Discharge to air of contaminants arising from a battery recycling facility	01/03/00	19/04/00	20	10/05/00	Application placed on hold to allow for a 3 month lead deposition monitoring programme. Hearing currently scheduled to be held by end of July.			
Eastern Bays Little Blue Penguin <sup>4</sup>	Consents associated with the development of a bird rehabilitation facility	12/04/00	30/05/00	727	Applicant chose not to have pre hearing	12/07/00 13/07/00 and 14/07/00	Commissioners Sue Driver and Ian Stewart	17/08/00	Court decision received 5 June 2001. All WRC consents were cancelled.
M Goddard	Overnight stays in boatshed	11/05/00	19/07/00	133	N/A	21/08/00 – 23/08/00	Councillors Buchanan, Gibson and McDavitt	20/09/00	Declined. Under appeal. Environment court date set in December 2001
B and S Pidford	Overnight stays in boatshed	31/05/00	19/07/00	133	N/A	21/08/00 – 23/08/00	Councillors Buchanan, Gibson and McDavitt	20/09/00	Declined. Under appeal. Environment court date set in December 2001



Applicant	Proposal	Date Consent Lodged	Date Submissions Closed	Number of Submissions Received	Pre-hearing Held	Hearing Held	Hearing Committee Members	Date Decision Released	Granted or Declined
M Ambrose	Overnight stays in boatshed	02/06/00	19/07/00	134	N/A	21/08/00 – 23/08/00	Councillors Buchanan, Gibson and McDavitt	20/09/00	Declined. Under appeal. Environment court date set in December 2001
M Ambrose	Consents associated with the construction of a new boatshed	02/06/00	19/07/00	139	N/A	21/08/00 – 23/08/00	Councillors Buchanan, Gibson and McDavitt	20/09/00	Declined. Under appeal. Environment court date set in December 2001
L Ramsey	Overnight stays in boatshed	02/06/00	19/07/00	133	N/A	21/08/00 – 23/08/00	Councillors Buchanan, Gibson and McDavitt	20/09/00	Declined. Under appeal. Environment court date set in December 2001
A and N Johns	Overnight stays in boatshed	06/06/00	19/07/00	134	N/A	21/08/00 – 23/08/00	Councillors Buchanan, Gibson and McDavitt	20/09/00	Declined. Under appeal. Environment court date set in December 2001
O and K Martin	Residential use of boatshed	06/06/00	19/07/00	162	N/A	21/08/00 – 23/08/00	Councillors Buchanan, Gibson and McDavitt	20/09/00	Declined. Under appeal. Environment court date set in December 2001

Applicant	Proposal	Date Consent Lodged	Date Submissions Closed	Number of Submissions Received	Pre-hearing Held	Hearing Held	Hearing Committee Members	Date Decision Released	Granted or Declined
R and P Lewis	Residential use of boatshed	06/06/00	19/07/00	139	N/A	21/08/00 – 23/08/00	Councillors Buchanan, Gibson and McDavitt	20/09/00	Declined. Under appeal. Environment court date set in December 2001
C Feast	Overnight stays in boatshed	06/06/00	19/07/00	134	N/A	21/08/00 – 23/08/00	Councillors Buchanan, Gibson and McDavitt	20/09/00	Declined. Under appeal. Environment court date set in December 2001
WRC – Water Group	Consents associated with the taking of water from the Orongorongo River for public supply	06/06/00	21/07/00	4	Negotiated outcome reached. Due to be heard by Commissioners by end of July.				
WRC – Water Group	Consents associated with the taking of water from the Wainuiomata River for public supply	06/06/00	21/07/00	7	Negotiated outcome reached. Due to be heard by Commissioners by end of July.				
WRC – Water Group	Consents associated with the taking of water from the Hutt River for public supply	06/06/00	21/07/00	5	Negotiated outcome reached. Due to be heard by Commissioners by end of July.				
Telstra Saturn	Consents associated with the installation and maintenance of a submarine fibre optic telecommunications cable, Titahi Bay.	05/07/00	16/08/00	215	No	16, 17, 18, 14, 15 October	Councillor Ian Buchanan, Commissioners	15/11/00	Appeals withdrawn and works have commenced.

Applicant	Proposal	Date Consent Lodged	Date Submissions Closed	Number of Submissions Received	Pre-hearing Held	Hearing Held	Hearing Committee Members	Date Decision Released	Granted or Declined
New Zealand Galvanising	Discharge to air for contaminants from a hot dip galvanising process and associated activities.	24/07/00	29/08/00	4	08/09/00	Application on hold to allow for ambient air monitoring to be undertaken.			
Transit <sup>5</sup>	Consents associated with the construction of an interchange at the intersection of State Highway 2 and 58.	07/11/00	19/01/01	99					
Tranist <sup>5</sup>	Consents associated with the realignment of State Highway 58	07/11/00	19/01/01	99					
Kapiti Coast District Council <sup>6</sup>	Consents associated with taking water from the Otaki River for supplementary public water supply.	04/12/00	12/03/01	115	22/5/01	Hearing currently scheduled for mid July			
Wellington City Council	Change of consent monitoring conditions for the Moa Point Pump Station	02/11/00	08/12/00	2		On hold for further information in relation to monitoring requirements			
Wellington City Council	Renewal of discharge of milliscreened effluent to the coast during wet weather events, Western Wastewater Treatment Plant	20/12/00	05/03/01	9		On hold for further information in relation to monitoring requirements			
Hutt City Council	Consents associated with the discharge of wastewater during major wet weather events	16/11/00	09/03/01	4	27/03/01	Paper being presented at this meeting of the Committee			

1 These applications were heard jointly with Wellington City Council

- 2 These applications will be heard jointly with Porirua City Council
- 3 These application were heard jointly with Upper Hutt City Council
- 4 These application will be heard jointly with Hutt City Council
- 5 These applications will be heard jointly with Hutt City Council, Porirua City Council and Upper Hutt City Council
- 6 These applications will be jointly heard with Kapiti Coast District Council

# Harbours Department Report Mike Pryce, Manager

June 2001

## 1. Harbour Navigation Aids

All navigation aids are operating satisfactorily.

## 2. Oil Pollution Response

Seven oil pollution reports were received. None required clean-up action. However, one incident involved a late evening call-out for the whole Departmental team when the police reported that a small tug berthed at Queen's Wharf was "low in the water with the decks awash". Although the call-out turned out to be a false alarm, four of the Department's staff were on the scene with salvage equipment in under 30 minutes, so it provided a very realistic deployment exercise.

## 3. Departmental Activities

- Deputy Harbourmaster participated in the manning of the Civil Defence Headquarter's Exercise on the 3 May 2001.
- On 7 July 2001 Harbourmaster and Deputy Harbourmaster participated in the WEMO/WCC "Tempest" Exercise.

## 4. Pilotage Exemption Certificates

There are presently 85 masters holding valid Pilotage Exemption Certificates for Wellington. This is the highest number of any New Zealand port because of the high number of regularly trading ferries using Wellington.

# **Emergency Management Department Report**

## **Rian van Schalkwyk, Manager**

**June 2001**

### **1. Project Phoenix**

A draft Exercise Plan has been prepared covering aspects such as background, aim and objectives, exercise scope, timings and ideas, appointments, responsibilities, organisational involvement and financial provisions. A Planning Conference will take place in Wellington on 20 and 21 June 2001 and will be attended by the Auckland Group, the Ministry of Civil Defence and Emergency Management and the Wellington Group. The Conference will take place at the Beehive and the main aim will be to finalise the Exercise Plan.

Some adjustments have been made to the overall objective and it now reads as follows:

*Establish a framework to identify and supply critical logistics resources required for public safety in the event of a major earthquake occurring in the Wellington Region.*

We met with members of the Police Executive on 23 May 2001 to discuss Project Phoenix. We are also attending workshops (four so far) with the Emergency Services Co-ordinating Committees. To date we have experienced widespread support for the Project and we are pleased with the progress being made. Project Phoenix is proceeding according to plan and we are organising special meetings/workshops with the Lifelines Groups, Executive Management of local authorities, Executive Management of the health sector, Water Groups and the Executive Management of the Emergency Services.

### **2. United Nations Training**

From 5 May to 21 May 2001 the Manager, Emergency Management, attended a United Nations Disaster Assessment and Co-ordination (UNDAC) course in Lausanne, Switzerland.

36 people from 27 countries participated in the course, 14 of whom were from UN-agencies (e.g. World Food Programme, World Health Organisation, etc.). They attended the course to learn how UNDAC works, and what part they would play in co-ordination, but they will never be deployed as UNDAC members. They came from Japan, Brazil, Chile, Colombia, Zimbabwe, Sudan, Eritrea, and Venezuela.

The course concentrated on three main activities, namely, co-ordination, assessment and information management. Every theoretical part of the course was followed up with a practical exercise. The exercises were outstanding.

UNDAC members play a major role in co-ordinating the needs of the UN-Agencies, National Authorities, the Resident/Humanitarian Co-ordinator in the affected country and the Office for the Co-ordination of Humanitarian Affairs (OCHA) in Geneva.

New Zealand, Nepal, the USA, India, Iceland, Lapland and Bangladesh joined for the first time. The other countries that participated were Canada, France, UK, Netherlands, Denmark, Norway, Finland, Switzerland, Germany, Italy, Sweden, and Austria.

A presentation regarding the course will be made at a next meeting of the Committee.

### 3. **Communications**

Weekly tests of the communications network continue. There have been no problems and the system seems to be functioning well.

### 4. **Activities**

Since the previous report of the Emergency Management Department to the Environment Committee on 15 May 2001, staff have been involved in various activities relating to public information and general emergency management planning.

- As part of the Department's short-term outputs, the annual emergency management exercise to demonstrate that the Regional Emergency Operations Centre could operate effectively in a major emergency event, was held on 30 April 2001 (Wairarapa) and 3 May 2001 (Wellington) respectively. Volunteer staff were also trained in the roles as set out in the Co-ordinated Incident Management System (CIMS).
- We attended the NZ Society for Earthquake Engineering's meeting on 1 May 2001. Main discussions evolved around urban search and rescue, building safety and assessments and the database regarding registered earthquake engineers. It was suggested that the WRC Emergency Management resource database should be used for this purpose. Discussions and information sharing also evolved around the Phoenix project.
- In view of Project Phoenix, a workshop attended by consultants, earthquake engineers, NZ Police, Fire Service and emergency management staff was held at the WRC on 4 May 2001. Discussions evolved around USAR capabilities in New Zealand, resources available, training in USAR, etc.
- We met with senior officials of the NZ Police (John Kelly, Roly Williams and Andy Warnes) on 23 May 2001 to discuss the roles and responsibilities of the Police with regard to the new Civil Defence/Emergency Management legislation. We also discussed their roles and responsibilities in Project Phoenix, with specific reference to the exercise that will take place from 23 to 25 July 2002.

- The Emergency Managers' meeting took place at the WRC on 28 May 2001. Representatives from the TLAs and the Ministry attended the meeting. Barry Earl from the Ministry visited the USA after the Seattle earthquake and he made a very interesting presentation to the meeting on how Seattle and surrounds managed the event. Other topics for discussion during the meeting included training, year of the volunteer, CDEMG updates, Project Phoenix and publicity strategies.
- On 29 May 2001 we took part in an exercise to test the resources of Anglian Water and Wellington City Council. This is a Wellington City Council driven project as a follow-up to the Black Box spill in Careys Gully last December. We were active participants in the exercise and also filled the role of marshals.
- On 1 June 2001 the Department participated in the Porirua City Council's Emergency Management Exercise. We have been regular participants for the last couple of years and normally fill management roles at their headquarters (controller liaison, planning, operations, logistics, etc.). Taking part in these exercises provides us with the opportunity to get experience in managing emergencies as well as the opportunity to meet and work with various people from different organisations
- A Natural Disaster Awareness Weekend took place at the Museum of New Zealand (Te Papa) from 2 to 4 June 2001 (Queen's Birthday weekend). The focus of the Natural Disaster Awareness Weekend was a series of re-enactments, displays, demonstrations, lectures and documentaries that drew visitors' attention to "Disaster Preparedness", should an earthquake, tsunami, flood, fire or volcanic eruption affect them. WRC Emergency Management, the Ministry of Civil Defence and Emergency Management, Wellington City Council Emergency Management (WEMO), the Earthquake Commission, the Institute of Geological and Nuclear Sciences and the emergency services (fire, police, ambulance) took part in the project which ran for three days. We attended several planning meetings at Te Papa to develop the programme of events. WRC Emergency Management staff displayed the mobile command centre and provided emergency management information to the public.
- On 6 and 7 June 2001 we participated in the Wellington City Exercise (Exercise Tempest). 16 organisations took part in the exercise and the objectives were as follows:
  - to rehearse the escalation process for a multiple incident emergency into the declaration of an emergency management response;
  - to assess the linkages between Wellington City Council, Wellington Regional Council, Wellington Emergency Management Office (WEMO) and central Government;
  - to identify actions required to improve the overall response and communication processes; and
  - to identify gaps in resource availability, including human resources, physical resources and infrastructure/ facilities.



## 5. General

- Since the last report, 19 earthquakes bigger than 3.0 on the Richter Scale occurred in New Zealand. The following Earthquake Reports for the Wellington Region (and reports of earthquakes felt in Wellington) were received from IGNS.

[2001 June 3](#) - 230 km south-east of Raoul Island (7.3)

[2001 May 25](#) - 20 km north of Taumarunui (6.2)

[2001 May 22](#) - 20 km west of Seddon (4.7)

[2001 April 14](#) - 20 km south-west of Seddon (4.5)

- Since the 15 May 2001 report, five Special Weather Bulletins (SWBs) were received on 24 May 2001 for strong wind (3) and heavy rain (2). The necessary warnings were sent out and no problems were experienced. The warnings were lifted on the morning of 25 May 2001.

## Richard Waddy, Divisional Accountant

### Financial Position: April 2001

#### 1. Operating Results

We are pleased to report the operating results for the ten month period ended 30 April 2001.

**Environment Division**  
**Summary Income Statement**  
**For the Period Ended 30 April 2001**

	<-----Year to Date----->			<-----Full Year----->
	<u>Actual</u> \$000s	<u>Budget</u> \$000s	<u>Variance</u> \$000s	<u>Forecast</u> \$000s
Rates	5,709.7	5,709.7	--	6,851.6
Other Revenue	1,564.6	1,604.2	39.6 U	1,989.3
<b>Total Revenue</b>	<b>7,274.3</b>	<b>7,313.9</b>	<b>39.6 U</b>	<b>8,840.9</b>
<b><u>Less:</u></b>				
Direct Expenditure	5,979.8	6,541.1	561.3 F	7,636.0
Indirect Expenditure	691.0	714.9	23.9 F	825.8
<b>Total Operating Expenditure</b>	<b>6,670.8</b>	<b>7,256.0</b>	<b>585.2 F</b>	<b>8,461.8</b>
<b>Operating Surplus (Deficit)</b>	<b>603.5</b>	<b>57.9</b>	<b>545.6 F</b>	<b>379.1</b>

#### 2. Operating Surplus

The Division's finances are sound. For the period the operating surplus reduced slightly to \$604,000. This is significantly higher than our budgeted position which provides for a smaller surplus of \$58,000.

The result translates to a net favourable variance \$546,000 and comprises a revenue shortfall of \$39,000, offset by reduced expenditure \$585,000.

#### 3. Revenue

Total Revenue at \$7,274,000 was some \$39,000 short of our budget target of \$7,314,000. The deficit is in the main with the Internal Revenue line, which although improving, is some \$51,000 short of our budgets.

The Internal Revenue shortfall is largely because of the accounting treatment of annual resource management charges. The Water Group requested that these be processed in monthly instalments instead of a single charge as previously. We have

accommodated their request. We expect that the shortfall will be fully extinguished by year end.

#### 4. **Expenditure**

Total Expenditure was \$6,671,000, that is some \$585,000 (8.0%) below our budgets.

The main reasons for this variance are:

- Personnel costs are under budget by \$104,000. This is largely due to staff movements in the period. It is expected that a small portion of this under-spend will be a permanent saving. However, we have incurred additional staff costs with an unbudgeted part-time position in Environment Co-ordination and a part-time secretarial position in Consents Management.
- Material Costs are some \$60,000 behind budget. The spend on environment education project works is less than our budgets anticipated at this stage. While that project is well advanced, the printing of this resource information will not be completed until June.
- External Contractors and Consultants are \$409,000 under budget. The level of expenditure on iwi projects continues to lag behind our budget. Other projects presently underway include an environmental survey (\$30,000), website development (\$33,000), the Ecobus design (\$25,000) and the development of a Business Bridges database (\$25,000). A further \$20,000 has been allocated to the Waiwhetu Stream investigation as this work is moving faster than expected.

Apart from iwi and personnel costs it is expected that the budget will be fully utilised.

#### 5. **Capital Expenditure**

- Presently our capital expenditure is slightly behind budget by \$17,000 (including proceeds from disposals).