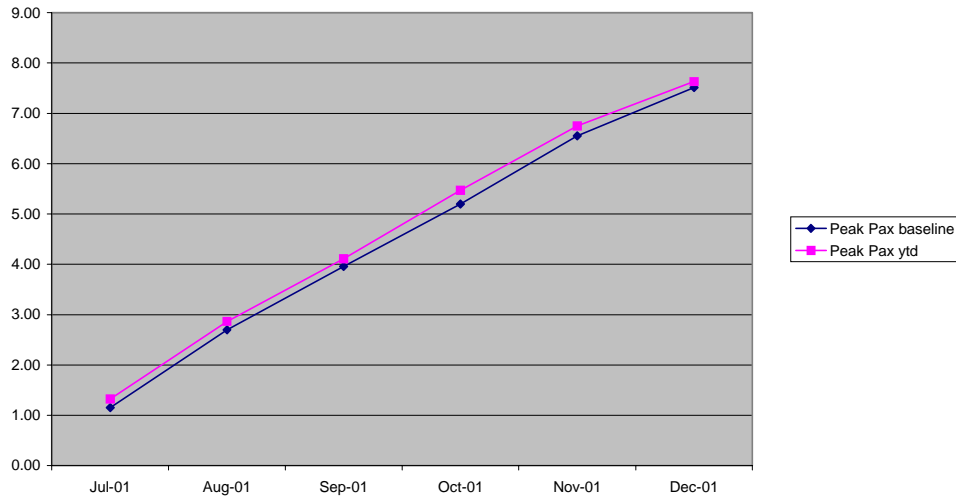


## Trend Graphs

### Peak Boardings

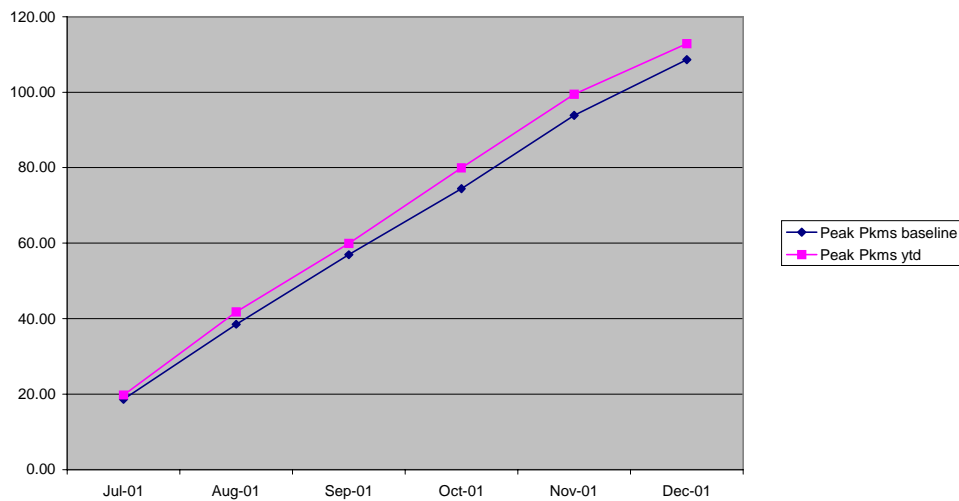
Peak Passengers year to date (millions)



	Jul-01	Aug-01	Sep-01	Oct-01	Nov-01	Dec-01
Peak Pax baseline	1.16	2.70	3.96	5.20	6.55	7.51
Peak Pax ytd	1.33	2.87	4.11	5.47	6.75	7.63

### Peak Passenger kms

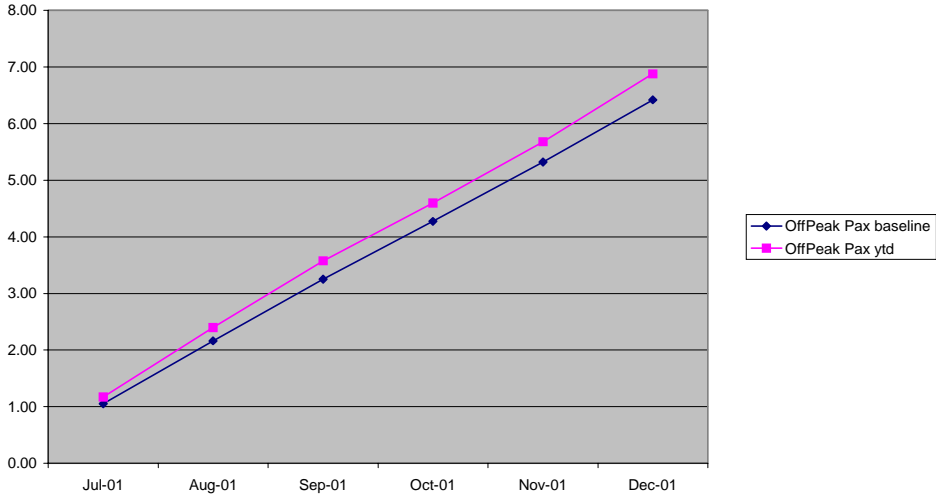
Peak Passenger kms year to date (millions)



	Jul-01	Aug-01	Sep-01	Oct-01	Nov-01	Dec-01
Peak Pkms baseline	18.67	38.50	56.92	74.49	93.84	108.58
Peak Pkms ytd	19.75	41.78	59.90	79.93	99.45	112.90

### Off Peak Boardings

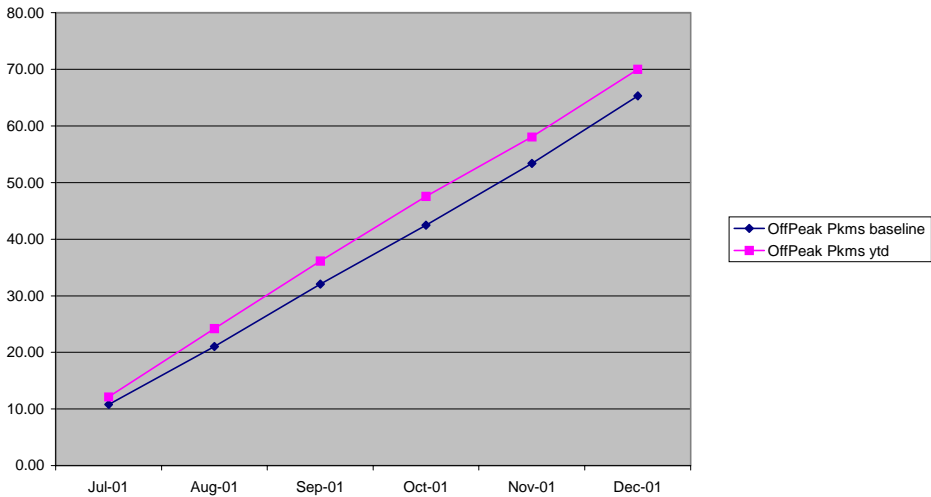
Off Peak Passengers year to date (millions)



	Jul-01	Aug-01	Sep-01	Oct-01	Nov-01	Dec-01
OffPeak Pax baseline	1.05	2.16	3.25	4.27	5.32	6.42
OffPeak Pax ytd	1.17	2.40	3.58	4.60	5.68	6.88

### Off Peak Passenger kms

Off Peak Passenger kms year to date (millions)



	Jul-01	Aug-01	Sep-01	Oct-01	Nov-01	Dec-01
OffPeak Pkms baseline	10.80	21.06	32.07	42.48	53.40	65.31
OffPeak Pkms ytd	12.14	24.20	36.11	47.57	58.06	70.02