
Greater Wellington Water

May 2007

Water Supply

May 2007

Water Supply Review of operations for the period ended 31 May 2007

1. Items of note

On 10 May a contractor operating a directional drilling rig beneath State Highway 1 just south of the Tawa exit drilled into the 750 mm wholesale water main. Our Contract Supervisor arrived at the site just as the pipe was penetrated and water started to appear. He made sure that the rig was shut down and that the drill was left in place to help plug the hole in the pipe.

The timing of the supervisor's arrival was very fortunate, as had the contractor removed the drill bit the resulting jet of water from the main would have started to rapidly undermine the highway.

This situation caused us no small amount of concern as the only other wholesale water main into Wellington, the 1,050 mm supply from Wainuiomata/Waterloo, was shut down for planned maintenance. This work had to be abandoned and the 1,050 mm main put back into service before the 750 mm main could be shut down.

Traffic management was in place, which blocked off one lane of the northbound carriageway. A temporary repair of the 750 mm main was made and the highway was back to two lanes by about 8:30 pm. Plans are now being made for a permanent repair.

This incident has highlighted a couple of issues that we regularly have to deal with that are detrimental to our organisation and also pose a risk to the security of Wellington's regional infrastructure.

The cost of repairs on this occasion will be \$10,000 to \$20,000 but it may be difficult to recover the cost from the contractor. The cost of traffic disruption (three hours delay for northbound traffic) is hard to judge but it would no doubt be a lot less than the cost of losing a section of State Highway 1 for a couple of days.

Even though the cause of the problem was not attributable to Greater Wellington Regional Council (GWRC), we inevitably bore the brunt of commuter frustration as it was Water Supply vehicles that were at the scene during the repair.

In this instance the damage to the water main was immediately evident and Water Supply employees were able to carry out repairs and retain the integrity of the pipe. In many other situations damage to water mains either goes unreported or unnoticed and might not become evident for some years as corrosion takes its course.

In most cases repairs to water mains are not unduly expensive and the impact is low. However, the consequential damage that could occur from a burst or leaking water main that is either adjacent to other services, e.g.,

telecommunications, electricity, gas, or placed so as to cause structural failure because of scouring, could be severe.

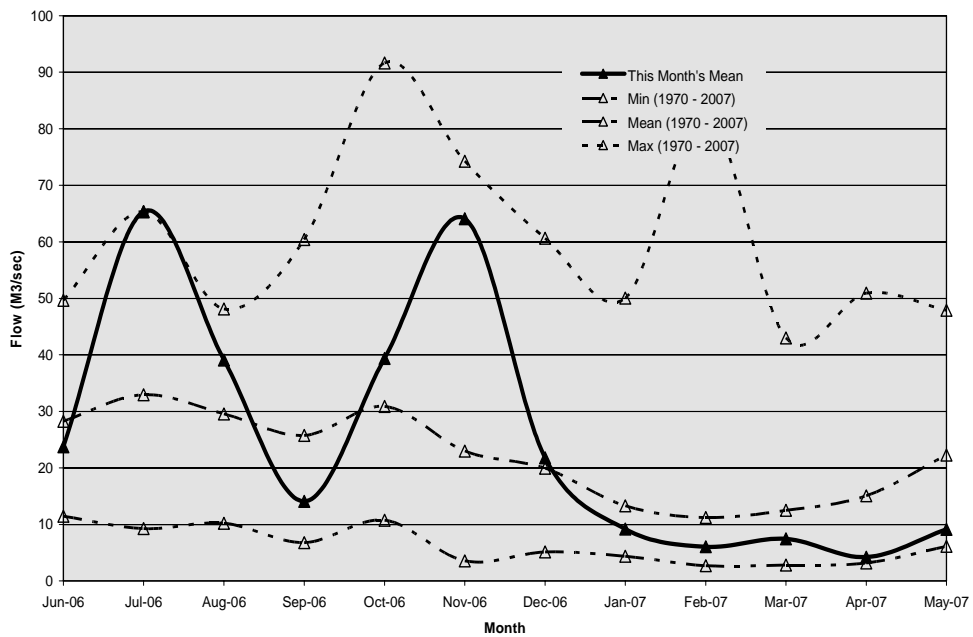
The one common aspect to this and many other similar events is the lack of quality controls and supervision of contractors by the asset owner.

2. Supply situation

There were no supply issues for the period, apart from the item in section 1.

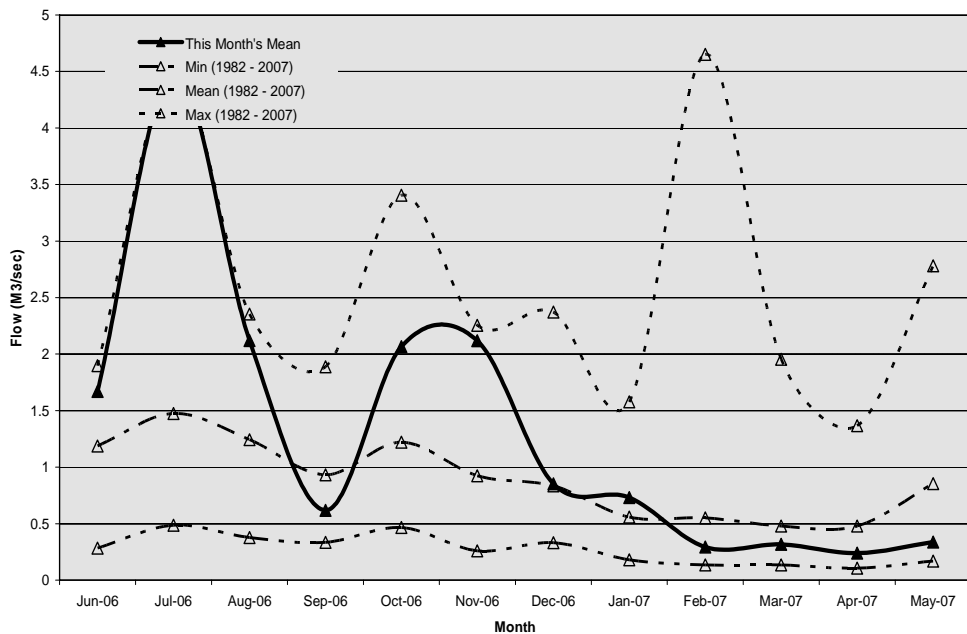
Hutt River flows

The monthly flow in the Hutt River for May was near minimum.



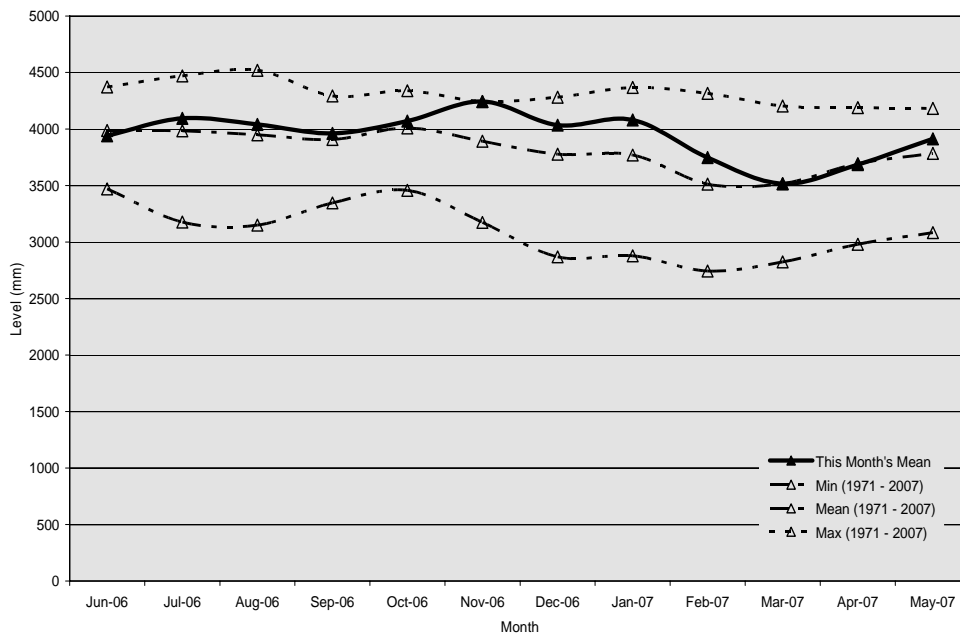
Wainuiomata River flows

The monthly flow in the Wainuiomata River in May was near the minimum.



Aquifer levels

The water level in the Waiwhetu aquifer in May was above average.



3. Treatment plants

3.1 Te Marua

3.1.1 Quality

- There were no Improvement Opportunity Forms (IOFs) or transgressions during the period.

3.1.2 Health and safety

- There were no accidents or incidents during the period.

3.1.3 Environmental

- There were no chemical spills or accidental discharges during the period.

3.1.4 Operations and maintenance

- There are no significant items to report.

3.2 Wainuiomata

3.2.1 Quality

- There were two fluoride transgressions during the period because of maintenance being carried out on the dose pump and load cell calibration.

3.2.2 Health and safety

- There were no accidents or incidents during the period.

3.2.3 Environmental

- There were no chemical spills or accidental discharges during the period.

3.2.4 Operations and maintenance

- Work being carried out at the Morton Dam to replace rip-rap and repair gabion baskets has been completed.
- The physical work on the filter to waste project has begun.

3.3 Waterloo and Gear Island Water Treatment Plants

3.3.1 Quality

- There were two fluoride transgressions during the period because of maintenance being carried out on the Naenae control valve and load cell calibration.

3.3.2 Health and safety

- There were no accidents or incidents for the period.

3.3.3 Environmental

- There were no chemical spills or accidental discharges during the period.

3.3.4 Operations and maintenance

- Dual stream operational research and investigations continued during the period.

4. Distribution

4.1 Health and safety

- There was one minor incident, which caused rope burn on an employee's hand.

4.2 Environmental

- There were no environmental issues during the period to report.

4.3 Operations and maintenance

- Work continued on the Randwick valve chamber external/internal changes with the remaining valves being housed in chambers. The valve chamber was sealed off from the access tunnel, the Point Howard branches were removed and new pipework installed.
- The fire hydrants and air valves on the collector main from the Waterloo Water Treatment Plant to Penrose Street were renewed and the bolts replaced on the access manholes. The maintenance on the Waterloo wellfield valve replacements is now 90 percent complete.

- Preliminary works have begun for the Thorndon electromagnetic flow meter project in Thorndon Quay. These works included submitting prior approval, street opening notices and traffic management plans to Wellington City Council for approval, and the service locations being marked up at the excavation site.
- The Porirua Low Level No. 2 Reservoir was shut and drained, and the standpipe installed.
- The 1,050 mm pipeline between Thorndon Pumping Station and Ngauranga valve chamber had to be shut down three times during the period - firstly to prepare the low level scour at Kaiwharawhara for pumping out of the 1,050 mm pipeline, secondly to repack the Sar Street branch scour and remove the body from the high pressure scour at Kaiwharawhara, and thirdly to install the reconditioned body for the Kaiwharawhara high pressure scour.
- The two monthly scour valve exercising for Hutt North and Hutt South was completed during the period.

4.4 Pipeline leaks

- There were two leaks during the period:
 - The 750 mm pipeline between Tawa and Johnsonville had to be shut down to repair a hole in the main caused by a contractor.
 - The Point Howard branch line had to be shut down to repair a leak on the 90° bend at Randwick.

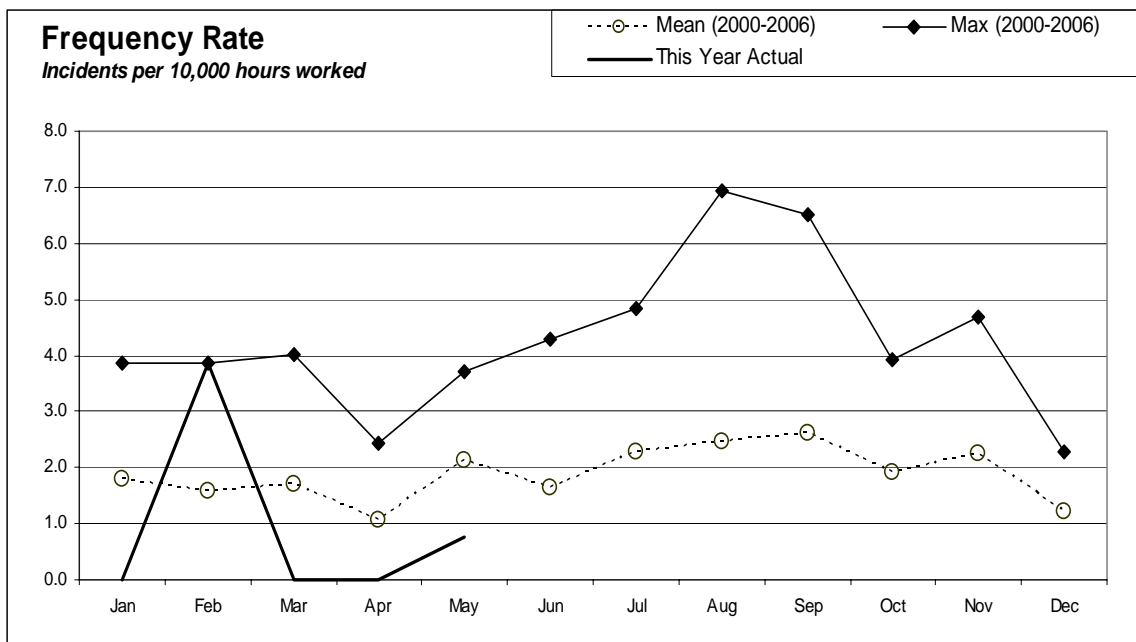
Water Supply and Forestry Health and Safety Data from July 2006 - Total Injuries

	Jul	Aug	Sep	Oct	Nov	Dec	Jan	Feb	Mar	Apr	May	Jun	
PRODUCTION (+ 4 OPS ADMIN)													
Hours worked	2473	2495	2535	2444	3399	2473	1650	2363	2620	2386	4111		Sep - Slipped off pipe
Employee numbers	16	16	15	15	15	15	17	17	17	17	17		Feb - Strained back / bruised head / sprained shoulder and lower back
Incidents	0	0	1	0	0	0	0	3	0	0	1		May - Rope burn on hand
Days lost	0	0	0	0	0	0	0	3	0	0	0		
Incidence rate (number of incidents per 100 workers)	0	0	7	0	0	0	0	18	0	0	6		
Frequency rate (incidents per 10,000 hours exposure)	0	0	4	0	0	0	0	13	0	0	2		
Severity rate (days lost to injury per 10,000 hours worked)	0	0	0	0	0	0	0	13	0	0	0		
DISTRIBUTION													
Hours worked	1423	1541	1573	1491	2034	1507	784	1356	1578	1336	2577		Jul - Cut hand / Slipped and fell against ute
Employee numbers	10	10	10	10	10	10	11	11	11	11	11		Aug - Hit head on ute door
Incidents	2	1	0	0	0	0	0	0	0	0	0		Oct - Sawdust blew into eyes
Days lost	0	0	0	0	0	0	0	0	0	0	0		
Incidence rate (number of incidents per 100 workers)	20	10	0	0	0	0	0	0	0	0	0		
Frequency rate (incidents per 10,000 hours exposure)	14	6	0	0	0	0	0	0	0	0	0		
Severity rate (days lost to injury per 10,000 hours worked)	0	0	0	0	0	0	0	0	0	0	0		
ENGINEERING CONSULTANCY													
Hours worked	1531	1656	1652	1624	2521	1648	760	1320	1740	1428	2099		Aug - Hit head on bookshelf
Employee numbers	10	12	12	12	12	12	12	12	12	12	12		
Incidents	0	1	0	0	0	0	0	0	0	0	0		
Days lost	0	0	0	0	0	0	0	0	0	0	0		
Incidence rate (number of incidents per 100 workers)	0	8	0	0	0	0	0	0	0	0	0		
Frequency rate (incidents per 10,000 hours exposure)	0	6	0	0	0	0	0	0	0	0	0		
Severity rate (days lost to injury per 10,000 hours worked)	0	0	0	0	0	0	0	0	0	0	0		
SUPPORT													
Hours worked	1035	1059	1122	1046	1572	1057	671	992	986	895	1452		Nov - Should bruised by door blowing in wind
Employee numbers	7	7	7	7	7	7	7	7	7	7	7		
Incidents	0	0	0	0	0	0	0	0	0	0	0		
Days lost	0	0	0	0	0	0	0	0	0	0	0		
Incidence rate (number of incidents per 100 workers)	0	0	0	0	0	0	0	0	0	0	0		
Frequency rate (incidents per 10,000 hours exposure)	0	0	0	0	0	0	0	0	0	0	0		
Severity rate (days lost to injury per 10,000 hours worked)	0	0	0	0	0	0	0	0	0	0	0		

LABORATORY	Jul	Aug	Sep	Oct	Nov0	Dec	Jan	Feb	Mar	Apr	May	Jun	Dec = Fell on gravel - cut knee
Hours worked	833	947	892	868	1350	813	592	716	761	785	1120		
Employee numbers	7	6	6	6	6	6	6	6	6	6	6		
Incidents	0	0	0	0	0	1	0	0	0	0	0		
Days lost	0	0	0	0	0	0	0	0	0	0	0		
Incidence rate (number of incidents per 100 workers)	0	0	0	0	0	17	0	0	0	0	0		
Frequency rate (incidents per 10,000 hours exposure)	0	0	0	0	0	12	0	0	0	0	0		
Severity rate (days lost to injury per 10,000 hours worked)	0	0	0	0	0	0	0	0	0	0	0		
STRATEGY AND ASSET	Jul	Aug	Sep	Oct	Nov	Dec	Jan	Feb	Mar	Apr	May	Jun	
Hours worked	528	740	664	680	1140	792	304	652	732	672	1080		
Employee numbers	5	5	5	5	5	5	5	5	5	5	5		
Incidents	0	0	0	0	0	0	0	0	0	0	0		
Days lost	0	0	0	0	0	0	0	0	0	0	0		
Incidence rate (number of incidents per 100 workers)	0	0	0	0	0	0	0	0	0	0	0		
Frequency rate (incidents per 10,000 hours exposure)	0	0	0	0	0	0	0	0	0	0	0		
Severity rate (days lost to injury per 10,000 hours worked)	0	0	0	0	0	0	0	0	0	0	0		
FORESTRY	Jul	Aug	Sep	Oct	Nov	Dec	Jan	Feb	Mar	Apr	May	Jun	Jul - Slipped and strained leg Jul - Tripped on vine and hurt knee and back
Hours worked	466	492	421	386	526	308	245	369	390	400	664		
Employee numbers	3	3	3	3	3	3	3	3	3	3	3		
Incidents	2	0	0	0	0	0	0	0	0	0	0		
Days lost	0	0	0	0	0	0	0	0	0	0	0		
Incidence rate (number of incidents per 100 workers)	67	0	0	0	0	0	0	0	0	0	0		
Frequency rate (incidents per 10,000 hours exposure)	43	0	0	0	0	0	0	0	0	0	0		
Severity rate (days lost to injury per 10,000 hours worked)	0	0	0	0	0	0	0	0	0	0	0		

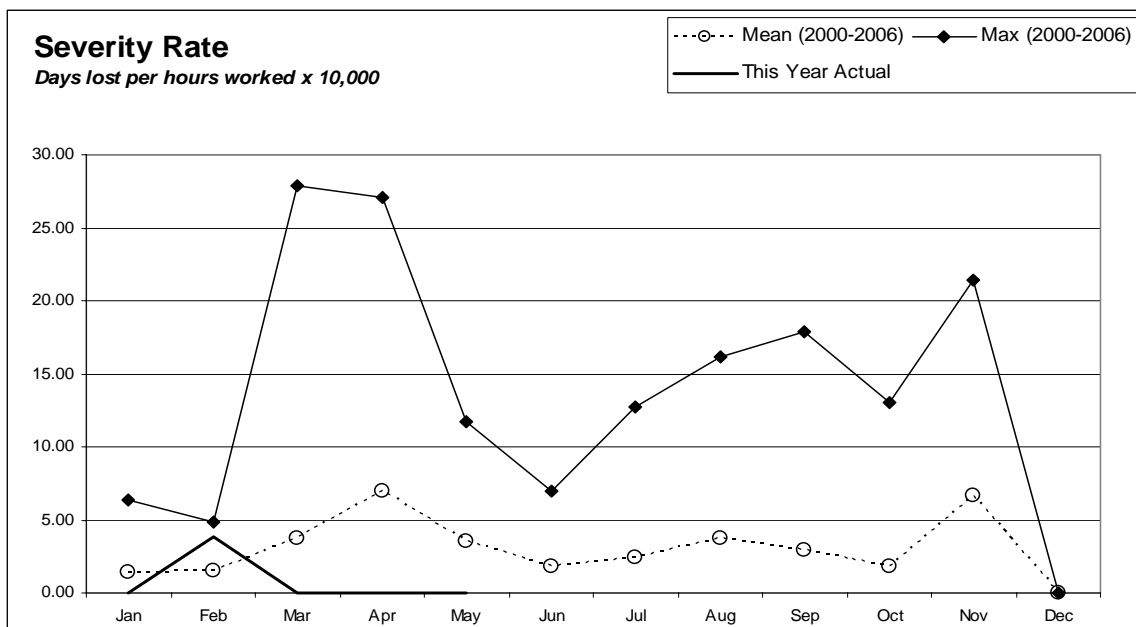
Water Supply and Forestry Combined	Jul	Aug	Sep	Oct	Nov	Dec	Jan	Feb	Mar	Apr	May	Jun
Hours worked	8288	8929	8858	85380	12541	8597	5005	7767	8806	7901	13102	
Employee numbers	58	59	58	0	58	58	61	61	61	61	61	
Injuries	4	2	1	0	0	1	0	3	0	0	1	
Days lost	0	0	0	0	0	0	0	3	0	0	0	
Frequency rate (incidents per 10,000 hours exposure)	5	2	1	0	0	0	0	4	0	0	1	
Severity rate (days lost to injury per 10,000 hours worked)	0	0	0	0	0	0	0	4	0	0	0	

Incidence rate = (number of incidents/number of employees) x 100
Frequency rate = (number of incidents/person hours worked) x 10,000
Severity rate = (days lost/person hours worked) x 10,000



Incidents

May - 1



Lost days

0

Engineering Services

May 2007

Engineering Services Review of operations for the period ended 31 May 2007

1. Asset management

- Key projects and their status are as follows:
 - Improvements to the Wainuiomata Lower Dam spillway have been completed. The Contractor, Juno Civil Ltd, received a Contractors' Federation award for the reconstruction of the spillway. The sealing of the scour pipes and filling of the reservoir have been programmed for September/October, after the trout spawning season.
 - Richardson Drilling Company Ltd has installed the three monitoring wells on the Petone Foreshore. The wellhead chambers are being constructed. The wells will monitor water level and conductivity to check for saltwater intrusion.
 - Preparatory work for the replacement of the control system at the Te Marua Water Treatment Plant, including equipment purchase and logic planning, is proceeding. The new system will be installed next financial year.
 - Construction of a portable powdered activated carbon plant to combat taste and odour problems is complete, apart from programming and commissioning.
 - The Contract for the installation of the effluent pipe from the Wainuiomata Water Treatment Plant centrifuge to the Wainuiomata sewer in Hine Road has been awarded to Juno Civil Ltd. The Contract Works are expected to start late July.
 - The Mechanical Trade Services Contractor is installing the filter to waste pipe at Wainuiomata Water Treatment Plant. The stainless steel pipe fittings have been fabricated and the filter outlet valves installed.
 - New quality monitoring equipment has been installed at Thorndon, Karori and Pukerua Bay, to allow the microbiological quality of the water in the distribution network to be monitored continuously. These instruments are being tested during May and June before being used for compliance reporting to the Hutt Valley District Health Board (HVDHB).
 - Various improvements to the telemetry system are being made at the request of Wellington City Council (WCC) to facilitate its separation from the WCC telemetry system and free up channels for WCC use.
 - A new control valve is being installed in the Tunnel Grove valve chamber. The valve and pipework are in place. Walkways and electrical control equipment are to be installed.

- A bypass pipeline for the Pukerua Bay Reservoir is programmed for installation in September 2007.
 - Randwick Pumping Station is being decommissioned. Pipework has been modified and a new access installed into the Randwick valve chamber. This work is nearing completion.
 - Arrangements are being made to install an actuator on the Silverstream line valve to improve seismic protection. Site work is programmed to start in July 2007.
 - New pumps are being manufactured at the supplier's expense to replace the rejected Kelburn pumps (poor condition and vibration problems). The replacement pumps are expected in September 2007. KSB Ajax Pumps (NZ) Ltd is also investigating the pump vibration issue. The old Kelburn pumpsets are continuing to supply water in the interim. The existing Karori Pumping Station will be decommissioned on completion.
- Construction of a new pumping station building at Grenada being funded by WCC is largely complete but installation of the power supply and commissioning have been delayed. Construction of a new reservoir above Grenada to be supplied by the pumping station has been delayed but a rising main to it is partially constructed. Since Greater Wellington Regional Council (GWRC) will take over ownership of the pumping station and the rising main on completion, the standard of the work is being carefully monitored.

2. New water sources

- Stage 2 studies of the potential to take water from the Upper Hutt aquifer are progressing well. Two 300 m diameter exploration wells have been drilled near Ward Street and two monitoring wells have been drilled at nearby locations. Initial testing indicates that a good flow of water is available. Each exploratory well will be tested for five days in July.
- Investigations and discussions are continuing with stakeholders on how best to evaluate the low flow requirements in the Hutt River, with a view to reducing the minimum residual flow at Kaitoke to allow more water to be abstracted in low flow conditions. Fish passage surveys in the upper reaches of the river have been completed, a preliminary assessment of algae issues made, and a survey of macroinvertebrates conducted. Possible changes to the *Regional Freshwater Plan* are being investigated to facilitate the taking of more water whilst providing greater assurance that ecological values will be safeguarded, particularly downstream of Birchville.

3. Quality assurance

- Our records indicate that compliance with the new *Drinking-Water*

Standards for New Zealand 2005 is being achieved at all four water treatment plants.

We are assembling information for HVDHB staff members to enable them to grade the three zones in the bulk distribution system. The target is to achieve an “a1” grading, the highest available. This is important because a downstream reticulation zone cannot be given a higher grading than the bulk zone supplying it. These zones have not been graded in the past. Information to enable the grading of the Gear Island Water Treatment Plant is also being collected. It is expected that the previous B grading can be lifted to A1.

- The *Health (Drinking Water) Amendment Bill* is being considered by the Health Select Committee. Further discussions have been held between Ministry of Health officials and Local Government New Zealand at the request of the Select Committee. Possible changes centre round rural water supplies and do not impact on Greater Wellington Water (GWW).

4. Environmental

- Lowering of the Wainuiomata Lower Dam spillway has been completed but delays over the issuing of a resource consent have deferred closing of the scour valves to create the wetland behind the dam until after the trout spawning season.
- Power factor correction equipment is to be installed at the Waterloo Water Treatment Plant next financial year.
- The three sentinel wells along the Petone Foreshore are close to completion. They will be equipped with instruments that will provide an early warning of saline intrusion into the Waiwhetu aquifer. This work is being undertaken jointly with the Environmental Monitoring and Investigations Department, and will reduce the risk of contamination of the aquifer.

5. Catchment management

- During this period we used machinery at Wainuiomata Water Treatment Plant and removed a large wind throw stump which was in the Wainuiomata River. The stump was too large for a 20 tonne digger to lift in one section.
- A road survey was carried out on the Orongorongo Road, with only minor work being necessary to ensure continued vehicle access. Some minor hydra mowing will be scheduled in early spring. A minor slump was repaired on the George Creek road.
- Upper Hutt Rangers assisted with the construction of an overflow culvert adjacent to the large slip at Orongorongo.

Marketing and Design

May 2007

Marketing and Design

Review of operations for the period ended 31 May 2007

1. Items of note

- Wellington Water Management Plan. The draft brief for research to identify behaviour and attitudes about water use and conservation, and the level of ownership of water efficient products, was finished and circulated to customers for comment. The research will strengthen the Technical Report and identify public support for various aspects of demand management. Wellington City Council invited us to the June meeting of its Environmental Reference Group, to provide an update on water conservation and demand management matters; we drafted a presentation in May. We commissioned consultants GHD to provide a more accurate estimate of costs related to implementing universal metering in our supply area. A brief was agreed and this work is under way. It will inform our community engagement around water supply strategy options in due course. Following an approach by the bathroom products maker Caroma, we met them to discuss the potential for joint promotion of water efficient technologies in the future.
- Water Supply Service Level Agreement. A further draft of the agreement was received from Capacity in mid-May for our approval. However, the draft contained a number of issues and did not reflect complete consensus by the four customers on a number of points. We are working on further refinements with Capacity.
- Water History Update. A further round of layout refinement and minor editing was completed. A few image-related matters and a final proof read remained “to do” at the end of May. A “final” draft for GWRC approval will be ready by the end of June.
- Delivering Water. Derived from the *Fresh* brochure, which is not being reprinted, this A4 leaflet gives an overview of GWRC’s water supply system. It has been finished and is ready for printing. We plan to complement this brochure with more detailed handouts for the individual water treatment plants in the new financial year.
- Summer Water Conservation Campaign. The irrigation system prize from our summer campaign, consisting of a rainwater collection tank and irrigation system with timer and rain sensor override, was installed for the prizewinner on our behalf by Total Irrigation.
- Water Conservation Planning. A marketing plan for water conservation activity for 2007/8 has been developed. The main points include research associated with the Wellington Water Management Plan, a spring promotional campaign to reinforce summer supply issues and encourage mulching, and enhancing our education resources.

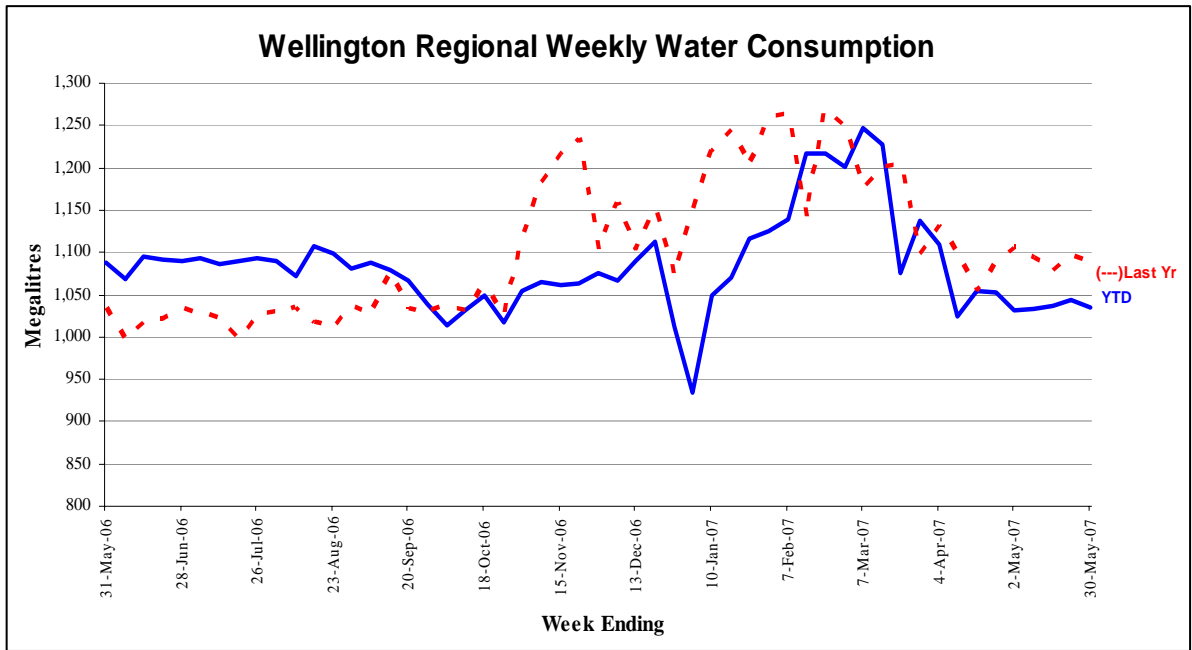
- **Treatment Plant Visits and Presentations.** There were three treatment plant visits in May, involving some 90 people. In response to an invitation from Lower Hutt Grey Power, a presentation about water supply to the Wellington Region was given to 70-80 people. Also in response to an invitation, a presentation about our role and related jobs in water supply was given to two classes from Miramar Central School.
- **Media.** There were no media releases made during May. The proposed 3 percent increase in the wholesale water levy for 2007/8, installation of the irrigation prize package from our summer water conservation campaign and the use of smart technology to increase the output capacity of Te Marua all received media coverage.

2. Water usage

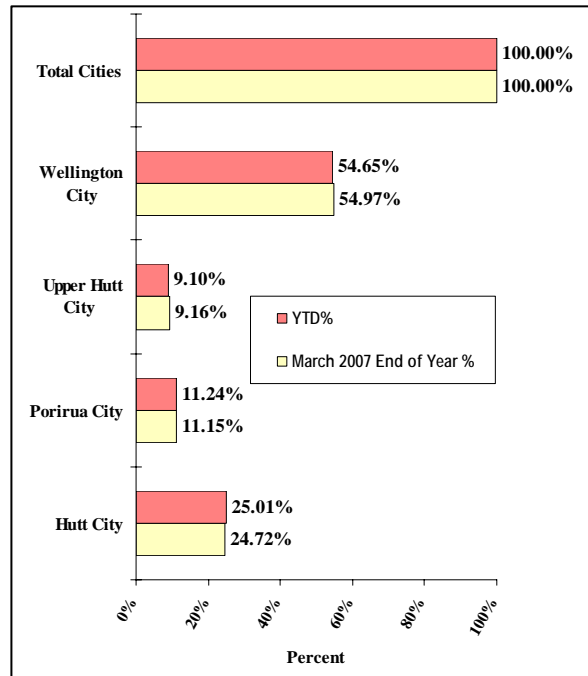
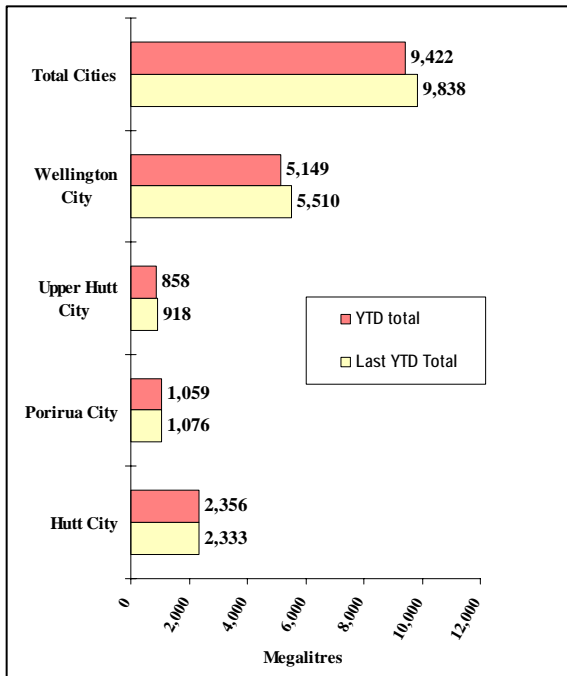
The volume of water supplied during May 2007 was not unusual. We supplied 4,596 million litres (ML) of water during May, averaging 148.2 ML per day. This figure is slightly lower than the May average for the previous five years of 149.8 ML. Last May's supply average of 156.2 ML was artificially high (5.1 percent higher than May 2007) because of a leak in Wellington.

For the metering year (April 2007 to March 2008), supply for the nine weeks to 30 May totalled 9,422 ML, 4.2 percent less than for the equivalent period in 2006/7 but only 0.1 percent less than the 9,431 ML supplied in the first nine weeks of the 2005/6 metering year. Compared with the share of water supply used by each city during the full 2006/7 metering year, Wellington and Upper Hutt have reduced their shares of the total water supply in the current metering year to date, while Lower Hutt and Porirua have increased their shares. Graphs detailing the sales volume information are on page 19.

Water sold over the last 12 months



Water sold from 1 April 2007 to 30 April 2008



Laboratory

May 2007

Laboratory Review of operations for the period ended 31 May 2007

1. Items of note

- The Laboratory's May income statement indicated a rather flattering surplus, probably because of understated direct expenditure. This will be brought back to earth in June with increased and final subcontracting costs.
- Laboratory employees were given a month's notice of termination of employment, because of the disestablishment of the GWRC Laboratory Services Business Unit and the consequent redundancy of positions therein, the effective date being 30 June 2007.
- All Laboratory analytical employees have accepted positions with ELS, the successful Tenderer for GWRC Contract No. 1260, *Water Supply Laboratory Services* and new service provider, with employment commencing 1 July 2007.

2. Business summary

Quality

There were no requests for retesting samples and generally test reports were timely. Subcontracting work has meant longer turnaround and reporting times.

3. Health and safety

There were no accidents or incidents, nor time lost during the period.

Forests Department

May 2007

Forests Department Review of operations for the period ended 31 May 2007

1. Metro Forests

1.1 Log Harvest Contract

Both crews continued with good production, with volumes limited by public holidays and the need for both crews to move stands. A change of stand effectively reduces production by about three days while road lines are cleared and skids constructed. Returns are further reduced as a result of the road line trees being “edge” trees with larger branches and, therefore, lower grades and skids being sited on ridges.

During this period harvesting of Longspur in Valley View was completed and Dick’s Yard in Puketiro was completed, apart from some unmerchantable trees adjacent to the main ridge. Log 6 opened up a hauler skid in Kilometre then moved to Parry’s Bush and Log 36 moved to Blowfly. During June Log 36 was withdrawn from Blowfly for the winter months and they assisted at Parry’s Bush before setting up the hauler in Kilometre Paddock. This move reduces the “in forest” cart from 22 km to 9 km, which will reduce the maintenance requirements over the wetter months.

Production for May was 4,922 tonnes for revenue of \$167,978 and similar results are anticipated for June. This will result in an annual production of 65,000 tonnes, less than the 70,000 tonnes sought but all that can be safely achieved by two crews.

Table 1 – Log 36 Puketiro 1.01- Output by Grade - Blowfly

Grade	May 2007	
	Tonnes	%
Pruned	854	23.28
Part pruned	0	0
S Grade	1,401	38.19
L Grade	0	0
R Grade	631	17.21
K Sawlog	261.	7.12
Roundwood	0	0
K Rough	300	8.20
Dom Rough	158	4.33
Pulp	30	0.83
O/S Pulp	0	0
Export pulp	30	0.84
Total	3,668	

Revenue for May totalled \$144,290 at an average of \$39.33 per tonne

Table 2 –Log 6 - Valley View - Output by Grade - Longspur

Grade	May 2007	
	Tonnes	%
S Grade	226	36.49
L Grade	0	0
R Grade	73	11.82
K Sawlog	54	8.73
Roundwood	0	0
K Rough	70	11.39
Dom Rough	39	6.43
Pulp	156	25.14
O/S Pulp	0	0
Export pulp	0	0
Total	620	

Revenue for May was \$17,944 at an average of \$29.81 per tonne

Table 3 – Log 6 Valley View 4.01- Output by Grade – Parry's Bush

Grade	May 2007	
	Tonnes	%
S Grade	488	54.44
L Grade	0	0
R Grade	163	18.20
K Sawlog	145	16.28
Roundwood	0	0
K Rough	0	0
Dom Rough	42	4.78
Pulp	56	6.30
O/S Pulp	0	0
Export pulp	0	0
Total	896	

Revenue for May was \$35,831 at an average of \$39.97 per tonne

Table 4 – Log 6 Valley View 12.01- Output by Grade – Kilometre Paddock

Grade	May 2007	
	Tonnes	%
S Grade	303	26.44
L Grade	0	0
R Grade	161	14.04
K Sawlog	165	14.41
Roundwood	0	0
K Rough	276	24.050
Dom Rough	0	0
Pulp	241	21.05
O/S Pulp	0	0
Export pulp	0	0
Total	1,149	

Revenue for May was \$27,487 at an average of \$23.92 per tonne

Prior month adjustment -1,412 tonnes, -\$57,574

Total revenue for May was \$167,978 for 4,922 tonnes at an average of \$34.24 per tonne

1.2 Silviculture Contract

Silviculture continued through May, with slightly better progress after the Contractor was able to engage some new staff. The silvicultural programme will run over into the new financial year but this should not cause any significant problems.

This month a further 6 ha were completed giving 59.1 ha completed to date out of a total of 117.3.

1.3 Plantation Forestry Operations

Further visits by consultants related to both the wind farm proposal and the new water source investigations took place in the plantation forest areas. RES completed the erection of the two 80 m anemometer masts, although the wind caused some damage to the cabling on the 247 track mast, which required two further visits to remedy.

The roads have continued to hold up well, with only minor damage caused in the main by the trucks metalling the new road into Parry's Bush. The road from Valley View Road into Kilometre was also upgraded in readiness for the hauler to commence operations in late June.

After upgrading the road through Rallywoods we were able to source a further supply of millings and upgrade about 300 m of badly broken up road around the 2 km mark. The road through Puketiro coped well with the haul out of Blow Fly and, although we had to tow up to the top of the ridge for half a day after rain, this was not too much of an inconvenience. We are pleased that the rain and cold of the end of June was after operations had been suspended for the winter. We will grade this section to reinstate shape and to control water in readiness for a return in spring.

1.4 Forest Access

Maungakotukutuku access remains the only significant problem, with the only access requiring two crossings of the Maungakotukutuku Stream between the end of the public road and our boundary.

1.5 Market Trends

Although prices have eased, we have avoided the worst of the shipping price increases that our competitors have faced because of the main Contractor, Rayonier New Zealand, locked in rates at the February price. It is hoped this will be the case until at least November.

Pruned prices have remained steady and, as we have now moved out of pruned stands for the winter, we look forward to some increases in time for our resumption of pruned logging in spring. Sawlog has also held well and the arrival of wet weather in the Wairarapa will ensure stable prices over winter.

2. Reserve Forests

2.1 Tauanui logging

Logging has progressed steadily as a result of the unseasonably dry conditions. This has allowed us to capitalise on the good returns from export logs (until the last week in May when the wharves were closed because of log stockpiles) and clear some localised low stocked areas of trees with large branches that did not meet the domestic sawlog specification. When export is limited, these logs are downgraded to oversize pulp, which gives a negative return after logging and cartage costs, or to firewood.

During April 1,105 tonnes were produced (this figure was not available at the time of writing the last report). For May, 1,622 tonnes were produced.

The crew has moved back into an area of predominantly sawlog and, as long as the conditions remain reasonably dry, a similar volume should be produced for June.

Access roads have handled the additional traffic well, with very limited maintenance required. One logging truck driver was reminded that access was restricted to daylight hours to limit the disturbance to neighbours. Despite the ongoing dusty conditions, there have been no complaints from the Whakatomotomo Road residents.

2.2 Silviculture

A total of 8.5 hectares of thinning were completed in Hiwinui. This work had been on hold because of extreme fire danger and prohibition of chainsaw thinning throughout the Wairarapa. High priority silviculture has been completed for the year. Any additional silviculture because of stands reaching trigger heights will be dependent on contractor availability.

2.3 Planting

Replanting of harvested areas will be delayed until ground conditions are considerably wetter. The small area ready for replanting will be considered later in July or early August.

2.4 Rural fire

Since the lifting of the restricted fire season in early May, there have been numerous burn-off escapes and this week a spate of wild fires. The most significant of these was a fire at JNL forest on Flatpoint Road attributed to power line arcing in extreme winds.

Fuel is extremely dry, with risks often being underestimated by those lighting fires. As a result there have been discussions about reimposing a restricted fire season (permit required).

2.5 Stoney Creek wind farm proposal

Two further prospective Tenderers inspected the proposed site.

2.5 Rough Hill fence

The Rough Hill fence line has finally been cleared. Mr Franks (and his staff) acknowledged that the agreed line was much steeper in places than they anticipated.

The line has been accurately measured and materials re-estimated. The costs will include the use of a helicopter to fly materials in to the steeper parts of the line, as it is impractical to lay them by hand.

We have requested an on-site meeting with Mr Franks and, while we have pointed out that time is running out, we have not yet had a response.