
Whitireia Park Board

Friday 3 December 2021, 9.30am

Titahi Golf Club, Gloaming Hill, Titahi Bay, Porirua

Members

Jenny Brash

Chris Kirk-Burnnand

Prue Lamason

Jenny Ngarimu (Chair)

Caleb Ware

Sharli-Jo Solomon

Whitireia Park Board

Friday 3 December 2021, 9.30am

Titahi Golf Club, Gloaming Hill, Titahi Bay, Porirua

Public Business

No.	Item	Page
1.	Apologies	
2.	Conflict of interest declarations	
3.	Public participation	
4.	Confirmation of the public minutes of the Whitireia Park Board meeting on 13 August 2021	3
5.	Board Accounts	6
6.	Work Programme Update	8
7.	Restoration Group Update	17
8.	Meeting dates 2022	31



SUBJECT **Whitireia Park Board minutes**

WHEN Friday 13 August 2021 at 9:38 am

WHERE Titahi Golf Club, Gloaming Hill, Titahi Bay, Porirua

Present

Jenny Ngarimu (Chair)	Sharli-Jo Solomon	Prue Lamason
Chris Kirk-Burnnand	Jenny Brash	

Sharli-Jo Solomon opened the meeting with a Karakia.

1 Apologies

Moved *(Prue Lamason/Jenny Brash)*

That the Board accepts the apology for absence from Caleb Ware.

The motion was **CARRIED**.

2 Conflict of interest declarations

There were no declarations of conflict of interest.

3 Public participation

There was no public participation.

4 Confirmation of the minutes of 9 March 2021

Moved *(Prue Lamason/Chris Kirk-Burnnand)*

That the Board confirms the minutes of the meeting of 9 March 2021.

The motion was **CARRIED**.

5 Draft Financial Accounts

Erin Humphrey, Senior Management Accountant, Greater Wellington, spoke to the report. Ms Humphrey explained that the income from water rates being \$1396 for the 2019/20 year to \$9780 for the year 2020/21 year were much higher for the 2020/21 year due to the COVID-19 interruption and timing of Porirua City Council Water Rates invoice and consequent recharge to the golf club. The 2020/21 year report includes some of the rates for the 2019/20 year.

Moved

(Prue Lamason/Chris Kirk-Burnnand)

That the Board:

1 Receives the report.

2 Approves the content.

6 Work Programme update

Wayne Boness, Principal Ranger Western, Greater Wellington Regional Council (Greater Wellington), spoke to the report.

The proposed new toilet block was discussed. Mr Boness explained that when the Work Programme update report was compiled in May 2021 that it was planned to progress with replacement during the 2020/21 financial year but that construction has now been postponed until the 2022/23 financial year. Further discussions and investigation around siting and artwork of the proposed new toilet block are underway with Ngāti Toa as the proposed site is on land owned by Ngati Toa. Once the old toilet block is removed consideration will need to be given to management of the site in consultation with Ngāti Toa. It is most likely this will be restored through planting.

The overall behaviour of visitors to the park has been good and ranger patrols continue to be carried out at random times.

Mr Boness outlined the progress regarding sourcing replacement components for the park entry gate control box, motors and the electrical components that were stolen. He confirmed that a further camera has been installed that looks directly down onto the control box and gate. This should minimise the occurrence of any further issues.

Concession applications detailed in the report in 3.1 on page 18 and summarised in Attachment 1 of the report were discussed. Mr Boness advised that a wedding is proposed to take place in early January with an estimated attendance of 100-200 people. The applicant proposed that Onehunga Bay was the preferred site for the ceremony, however, Mr Boness recommends because of the large number of people that the ceremony take place in an area adjacent to the concrete pads and that he will work with the applicant to find an acceptable alternative location to Onehunga Bay.

The issues with the recent blockage in the cross-harbour sewage pipeline resulting in an overflow into Porirua Harbour at Whitireia Park were discussed. Wellington Water is undertaking repairs and remedial work will be carried out where soil has been dumped and now covers previous plantings.

The Biodiversity management part of the report was taken as read, apart from a brief overview and discussion regarding *Helichrysum* (Licorice plant).

Moved

(Jenny Brash/Prue Lamason)

That the Board:

- 1. Receives the report.*
- 2. Approves the content.*
- 3. Approves the park operational budgets for 2021/2022 as set out in section 3.3 of this report.*
- 4. Approves the Whitireia Park permissions requests, as set out in Attachment 1.*

The motion was **CARRIED**.

7 Restoration Group – August 2021

The report (for information) provided by Chris Gibbons, Rob Hughes, Angus Hulme-Moir, Lisa Casasanto, Robyn Smith, Edmud Stephen-Smith and Robert Stratford all of whom are Coordinators from the Whitireia Park Board Restoration Group was taken as read.

The board acknowledged the work carried out by the Restoration Group and expressed thanks for the report.

8 Parks Management Plan 2016

Fiona Colquhoun, Parks Planner, Greater Wellington, brought the Board's attention to the above plan and it was agreed that Fiona and Ashley Sagar, Ngāti Toa, would look at it together in liaison with other Ngāti Toa and Greater Wellington officers. Fiona advised that it would be preferable to leave a full review of the Management Plan until decisions are made as to what will happen with the Radio New Zealand land. It was agreed that Fiona would report back to the next meeting on 3 December 2021 and that a workshop following the 3 December meeting would be held.

Jenny Ngarimu closed the meeting with a Karakia.

The meeting closed at 10:42 am.

Jenny Ngarimu
Chair, Whitireia Park Board

Date:



SUBJECT: Report for Whitireia Park Board meeting
AUTHOR: Darryl Joyce, Accounting Services Manager
DATE OF MEETING: 3 December 2021
SUBJECT: **Board Accounts**

1. Purpose

To present to the Whitireia Park Board (the Board) the management accounts for the period 1 July 2021 to 31 October 2021.

2. Income

Income has been received from:

- \$3162.50 from Titahi Bay Golf Club for lease of the land;
- \$15.32 Gross Interest received on the current bank balance of \$62,915.16.

3. Costs

Total costs for the 4 months from 1 July 2021 to 31 October 2021 were:

- \$1,237.50 for reimbursement to Greater Wellington Regional Council (Greater Wellington) which was paid on behalf of the Board, being 12 months of GST for the period 1 July 2020 to 30 June 2021 because access to the Board bank account was unavailable;
- \$40.00 for the Auditor Annual Confirmation Report.

4. Bank Account

The BNZ Bank account balance as at 30 June 2021 was \$62,915.16.

5. Titahi Bay Golf Club Water Rates

There is no further update available.

6. Other

Erin Humphrey, formerly the Greater Wellington Management Accountant providing the treasurer function for the Board has left the employ of Greater Wellington. Darryl Joyce (Author) will cover this function until a permanent placement is appointed.

7. Access to BNZ Account

A full set of accounts has not been produced for the first 4 months of the financial year due to a delay in accessing the Board's bank account. Access has now been arranged and a set of accounts will be provided at the next Board meeting on 25 February 2022.

8. Recommendation

That the Board:

1. ***Receives the report.***
2. ***Approves the content.***

Report prepared by:

Darryl Joyce
Accounting Services Manager

Report approved by:

Janine Heathcote
Team Leader Financial Accountant



SUBJECT: Report for Whitireia Park Board meeting

AUTHORS: Gary Wheaton, Park Ranger; Kim Broad, Biodiversity Advisor; Fiona Colquhoun, Strategic Planning

DATE OF MEETING: 3 December 2021

SUBJECT: **Work Programme Update**

1. Purpose

To provide the Whitireia Park Board (the Board) with an update on implementation of the annual work programme at Whitireia Park and seek a decision for the Recommendations outlined in Paragraph 8 of this report.

2. Background

A programme of work for the 2021/22 financial year as approved by the Board at its meeting on 13 August 2021.

3. Park management

Regular patrols still continue to be undertaken at random times. The park continues to be busy during winter and spring. The main issues with vehicles looking for opportunities to drive off road on the tops has been all but alleviated through work on the road side banks to make it almost impossible to climb off the road. We have had many reports of dirt bikes ripping around the tops and down to Onehunga Bay. Our message to complainants is to call the Police in the first instance as its endangering the public and they have powers and tools not available to Greater Wellington Parks staff. A couple of these riders were approached in August and Greater Wellington's Mobile Ranger Western, Gary Wheaton was threatened with a big piece of wood so NZ Police are now called in these situations. Greater Wellington's Principal Ranger Western, Jeremy Paterson has had a meeting with NZ Police who have said that it's a massive problem throughout the whole Porirua basin. They have advised GW staff and any members of the public to forward as much information about these riders including descriptions and any footage to them for follow up.

Rubbish dumping has not been an issue except for around the Shelly Street area. RNZ has indicated that they will be getting a digger in to tidy up at that end of the Park and Greater Wellington will consider may contribute financially towards the clean-up and planting. There is an occasional incidence of graffiti occurring at the toilets.

Many people walking dogs are continuing to ignore the 'dog on lead areas'. Education continues to be the best approach and we are looking at making a few social media posts and specific Ranger patrols throughout summer. Improvements in behaviour is being achieved, although it is a slow process which will continue to take some time.

Greater Wellington has engaged a new security company for the park as the previous company has decided to no longer be involved. MS Security are delivering a very good service at Queen Elizabeth Park and have been providing this service at Whitireia Park since 1 October 2021. MS Security will look after the majority of lock-ins and do a couple of random lock-up patrols each month.

Ongoing track maintenance continues, including trimming of vegetation, cleaning drains and culverts and some track edge spraying. Mowing of amenity sites and road edges has continued. Replacement culvert markers are still being installed along the edge of the road to assist motorists with better visibility of the culverts and it is hoped that this will prevent motorists from driving into the culverts.

Work is still underway on the replacement toilet project. Options are still being investigated.

DoC used the concrete pads (heli pads) for another flying operation in September 2021.



Getting loads stropped up for the airlift to Mana

The main entrance gate at Thornley Street that was damaged and had components stolen has been repaired. It is planned to replace the gate with a more secure boom gate and the current gate will be reused at Battle Hill Farm Forest Park. Boom gates have proven to be a better more secure option in other remote locations.

The restoration plan that was being prepared to plant a green fire break adjacent to the lizard release site has been finalised and work is now underway to secure plants and organise site preparation. The planting will be undertaken by local schools in 2022 as part of the Arbour Day planting events.

Penguin signs: Ashleigh Sagar from the Runanga made contact regarding the penguin sign. To avoid confusion with communication, Tara Merriman, Marketing and Communications Account Executive at Greater Wellington has taken over the coordination of this project and will work closely with Ashleigh and the team to progress the development of the design.

Brian Thomas, Manager Horticulture, Porirua City Council has made contact regarding the large grass fire break on Morning View that they mow. He indicated that it would be desirable to plant it out in vegetation in an effort to curtail some bad behaviour that has occurred there. Some issues regarding their plan were pointed out and we are currently waiting to hear back from them.

Unauthorised weed spraying has been carried out in the park. A camera has been installed in an effort to identify the person or persons involved. To date it appears that Kikuyu grass has been sprayed in some areas and then inter-planted with non-eco sourced plants.

We have been approached by a member of the public, Joel de Boer, who lives on the outskirts of the park. Joel would like to undertake some planting in the valley which is to the left of Transmitter Street past the Thornley Street entrance gate. Kim Broad and I have been to visit him to ascertain what his aspirations are and how we can perhaps help. We have suggested that he submit a plan for the Park Boards approval. Please refer to a letter received from Joel in [Attachment 1](#) and the accompanying Planting Area Map in [Attachment 2](#).

Firebreak cutting and hay mowing has been booked for the beginning of December 2021.

Greater Wellington will ensure that rubbish, dog bins and patrols continue throughout the holiday period, including periods when Parks staff are on leave.

4. Concession applications

Three concession applications have been received for consideration by the Board. The applications raise no concerns to officers; weddings are low impact and contain several conditions to ensure the park is well looked after. Porirua Grand Traverse has proved to be a good operator in the past and are seeking a 5 year renewal.

The applications are summarised in [Attachment 3](#), Whitireia Park Permissions.

5. Visitor counts

These are unavailable due to a software issue.

6. Whitireia Park Management Plan 2016 – interim review

At the last Board meeting it was agreed that an interim review of Plan actions would be beneficial. Greater Wellington and Ngāti Toa officers have begun discussions about issues and opportunities and propose presenting a report at the next meeting for discussion. Feedback from the Restoration Group will be also be sought. Key issues to date have been identified as:

- People keeping their dog on lead at Onehunga Bay
- Restoration challenges - weeds (e.g. cotoneaster, bone seed, karo), restoration plantings
- Penguins & habitat protection
- Motor bike activity/ policing
- Widening access road, adapting access once possible changes for Radio NZ land is known
- New toilet location
- Onepoto Road (PCC paper road) formal resolution
- Heritage storytelling, archaeological site conservation plan?

7. Biodiversity management

7.1 Pest animal control

A night-time search of the Park for possums and rabbits was undertaken by staff on a warm night in mid-October. Thermal imaging equipment showed no possums, rabbits, hares or even hedgehogs were out. The only wildlife seen were two cats on the cliff tops, a morepork and skylarks bedding down in the long grass.

Members of the Restoration Group have continued their great work on controlling other pests (mice, rats, hedgehogs, weasels and stoats).

7.2 Control of ecological weed

Planning of this year's weed control work aimed at protecting the Key Native Ecosystem site has been completed and work is underway. This work is focused on controlling weeds impacting high value areas such as the coastal escarpments, dunes, wetlands and Te Onepoto estuary, and working towards eradicating three highly impacting weed species; Japanese honeysuckle, Spanish heath and licorice plant.

Part of the planned work includes aerial spraying by helicopter. This was started on 18 November 2021 but couldn't be completed due to the wind speed rising too high. We intend to complete the aerial spraying prior to the start of the Christmas school holidays if

weather conditions allow. Otherwise it will be undertaken following the end of the school holidays. Public notification of the spraying operation was undertaken through the local newspaper and delivery of information to nearby homes.

Ground based control work has been started. It is likely to be a few months before the various different pieces of work have been completed.

7.3 Restoration planting

We have worked with the restoration group to identify areas for planting in winter 2022. Grass control will be carried out to prepare these areas ahead of planting.

7.4 Kārearea/falcon deaths

We were saddened to hear of the deaths of two kārearea due to electrocution on the top of a power pole in the park. We are extremely thankful for the initiative and action taken by both Whitireia Park Restoration Group and Wellington Electricity in highlighting this issue and finding a solution to the electrocution threat in the park. Wellington Electricity plan to install insulators on all 19 power poles in the park in order to prevent further deaths. We are planning to do a media release about this event and to raise awareness of this threat to kārearea.

8. Recommendations

That the Board:

- 1. **Receives** the report.*
- 2. **Approves** the content.*
- 3. **Approves** that Joel de Boer may undertake planting in the valley situated to the left of Transmitter Street, past the Thornley Street entrance gate as outlined in Attachment 1 and as identified on the Planting Area Map in Attachment 2.*
- 4. **Approves** that the activities detailed in the Applications summarised in Attachment 3, Whitireia Park Permissions, may proceed.*

Report prepared by:

Gary Wheaton

Park Ranger, Queen Elizabeth Park

Report prepared by:

Fiona Colquhoun

Strategic Planning

Report approved by:

Al Cross

General Manager

Environment Management Group

Greater Wellington Regional Council

Report prepared by:

Kim Broad

Biodiversity Advisor

Report approved by:

Jimmy Young

Manager, Parks

Attachment 1 to Work Programme Update 3 December 2021

Kia ora Kim and Grant,

Thanks for the meeting the other day. Very much appreciated.

A little bit about myself. I have lived in Titahi Bay at 25 Whanake Street for nearly 20 years. I have helped coordinate Pestfree Titahi Bay for over the last 3 and a member of Pestfree Porirua. I have a Master's Degree in Environmental Studies (Completed at Victoria University in 2002), as well as completed an apprenticeship in Horticulture and Gardening in 1991. I am a Project Manager - Coastal and Marine, at Wellington City Council, having held planning and advisory roles under the Reserves and Resource Management Acts.

I have known Robin Smith for a number of years and assisted with planting and weed control in Whitireia Park for several years.

I would like to make a request to the Whitireia Park Board to undertake planting in the gully to the left of Transmitter St, past the entrance gate on Thornley St. I have shown the areas I'd like to plant in blue in the attached aerial. By planting in this gully, including swamp flax and other native trees, I hope to encourage more biodiversity in the park and reduce weed species. Ultimately, a habitat for native birds will be provided.

I will plant eco-sourced native vegetation as outlined in your Regional Native Plant Guide.

I can source my plants from different suppliers including PCC and WCC nurseries, as well as John Hornbow. John has supplied native plants from seed from around Porirua, including Taupo Swamp and Stuart Park to Enviro Schools and other local restoration projects.

I have forwarded you an email from John Hoernblow confirming he can provide me eco-sourced plants.

I understand that Gary will help spot spray areas before planting until I can demonstrate I have a GrowSafe certificate.

I will also be in contact with Owen Spearpoint, assuming there is Board approval, so I can gather seed/cuttings etc. at a later date.

Many thanks for your time on this. Happy to discuss further.

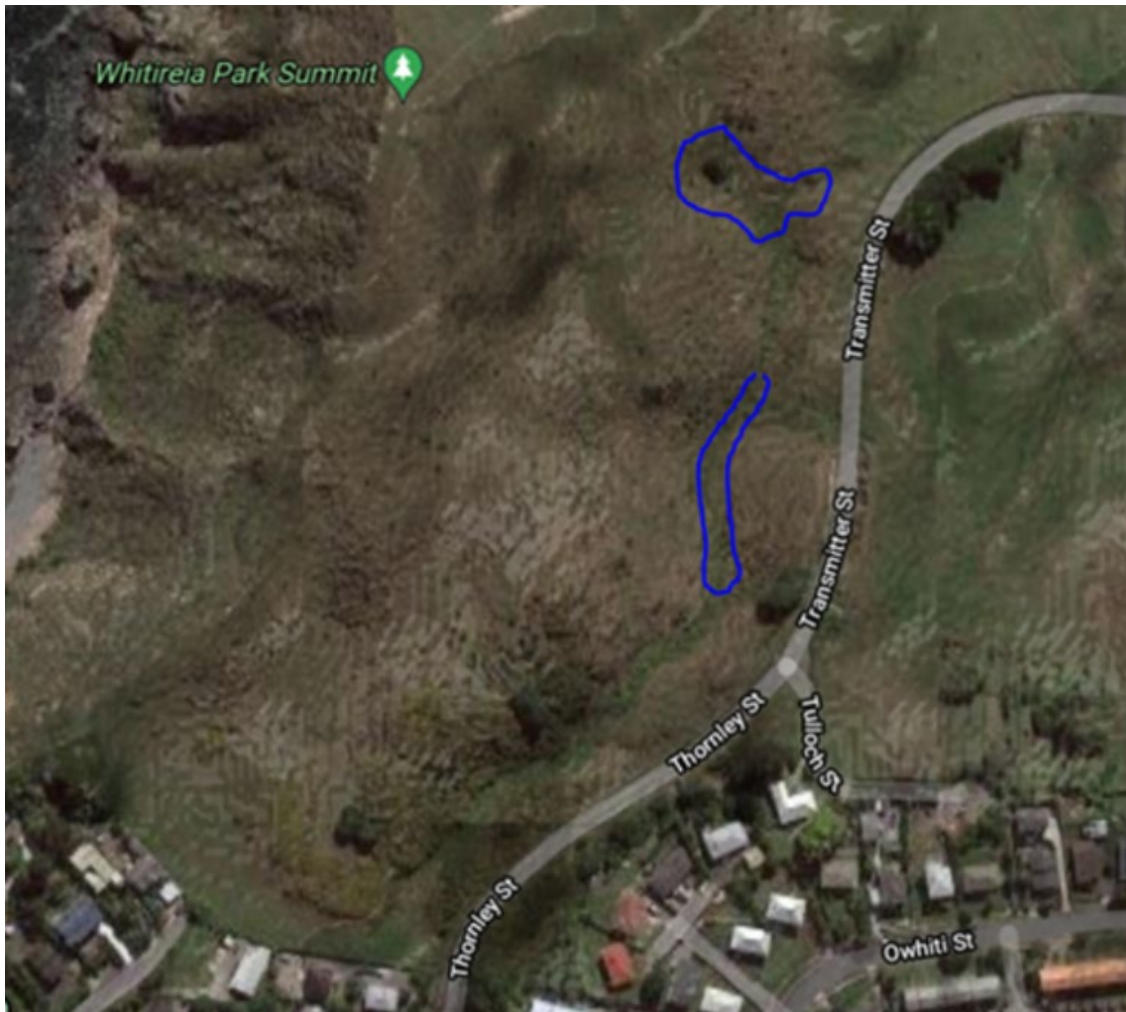
Looking forward to working with you both in the future.

Nga mihi nui,

Joel de Boer

Ph. 021 227 8323

Attachment 2 to Work Programme update 3 December 2021
Planting area map



Attachment 3 to Work Programme update 3 December 2021

Whitireia Park Permissions

Purpose: to seek approval of the Board for the following activities to take place on Whitireia Park

Applications (have) been received by Greater Wellington Regional Council as follows:

Activity name & description <i>(eg Mac's Ice Cream van – food vendor)</i>	Activity type <i>(allowed, managed, restricted)</i>	Date of application	Date of activity <i>(start date – finish date including pack in & out)</i>	Time Critical Approval? Yes/ No	Controversial or significant? Yes/ No <i>EG</i> <ul style="list-style-type: none"> - <i>Exclusive use</i> - <i>High profile/ attracts attention</i> - <i>Sensitive site</i> - <i>Displaces others</i> - <i>Requires/ risks digging/ cutting/ trampling/ polluting</i> - <i>Potentially hazardous (including chemicals, firearms)</i> - <i>Potentially frightening or offending</i> 	Proposed condition eg <ul style="list-style-type: none"> - <i>No confetti, stakes, excavation, veg cutting</i> - <i>Site map (avoid significant cultural/heritage sites)</i> - <i>Timing</i> - <i>Insurance etc</i>
Porirua Grand Traverse	Multisport event	28/09/2021	5yr renewal from 2022	No	<ul style="list-style-type: none"> • High Profile, long standing concessioner • Includes short duration road closure through park. 	<ul style="list-style-type: none"> • Pre-race signage • Traffic control
Allpets	Dog walking	05/10/2021	Date from approval for 1 year	No	No	<ul style="list-style-type: none"> • Insurance • Signage • Limit on numbers
Elena Madsen	Wedding	20/09/2021	02/02/2022	No	Normal wedding up at the top	Usual conditions

Whitireia Park Restoration Group – November 2021

For Decision

General

The budget for 2021/22 financial year has been prepared. Planting sites for winter 2022 have been selected.

1. *Leptinella nana* (Nationally Critical) – Robyn Smith

- a. The 2 *Leptinella nana* sites have been hand weeded during November and are looking very healthy. I am hoping to present my findings on how to manage this species to the New Zealand Plant Conservation Network Australasian conference in March 2022. If the presentation is approved, I will supply the Board with the presentation.

b. New Zealand's favourite plant of the year

Whitireia Park's most special taonga *Leptinella nana* has won New Zealand's favourite plant for 2021. There is an annual competition each year to vote for Aotearoa/New Zealand's favourite plant run by the NZ Plant Conservation Network and is a light-hearted way of promoting native plant species.

Whitireia Park Restoration Group (WPRG) lobbied extensively on the Whitireia Restoration Group Facebook page, Titahi Bay Facebook page and every social media group associated with native plants. Our promotion said:

Vote *Leptinella nana* for native plant of the year on the NZPCN website. Why?
Because it needs its place in the sun.

1. There is less than 20 square metres remaining in the world.
2. It is more threatened than kākāpō
3. It is a beautiful iridescent green
4. Its leaves are like tiny feathers
5. It has a bright yellow flower that is 2mm wide which provides nectar for insects and lizards.
6. It needs recognition and people to help it to survive.

c. Request for one-off grant – Robyn Smith (For Decision)

This year WPRG received funding from the Department of Conservation (DoC) for weed control around the *Leptinella nana* sites. A DoC contractor was used to control weeds. This allowed WPRG to plant tauhinu and mānuka around the existing populations to extend the habitat with the goal that the plant can become self-sustaining in the future.

DoC is unable to provide any further funding for the coming financial year and I ask the Board to consider approving funding for me (Robyn Smith) to obtain a GrowSafe certificate at a cost of \$425 plus GST. (Refer to recommendation on Page 10).

Background Information:

I have previously had a GrowSafe certificate which lapsed many years ago, but I have a lot of experience with very careful low impact spraying. There is other very small-scale spraying in the park needed in our restoration sites such as controlling clover and African daisy which are both starting to invade the dunes at Onehunga Bay and Kaiua Bay.



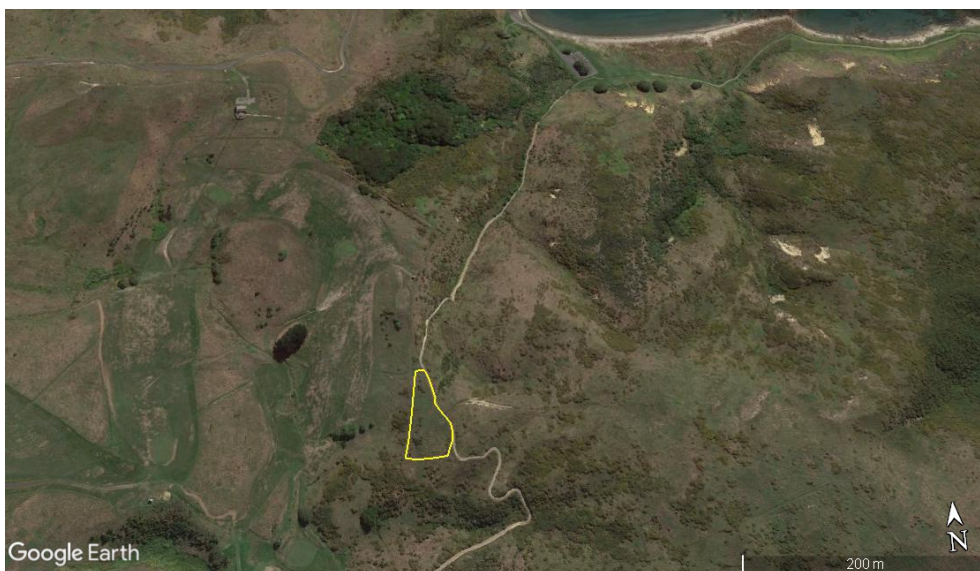
Leptinella nana



2. Planting sites for 2022 – Chris Gibbons

Two public planting sites have been selected for 2022. One is on the saddle between Onehunga Bay and Te Onepoto stream valley and will take up two (2) public planting days (Map 1). The other public planting day will be on further work at Onepoto estuary (Map 2).

A small area of kikuyu grass east of Onehunga Bay dunes will be sprayed and then planted with pīngao and back dune plants by school groups in the winter of 2022 (Map 3).



Map 1. Planting site on saddle between Onehunga Bay and Onepoto stream valley



Map 2. Onepoto estuary planting sites



Map 3. Onehunga Bay due extension – planting site outlined in red.

3. Pest control - Rob Hughes

There have been 108 catches for the year to date.

We have added a new trap line up the eastern side of the valley from Onehunga Bay and across the top on the fence line.

Five of DOC 200 traps plus 4 rat traps have been supplied by from GWRC and DOC provided five (5) A24 traps.

The next project for WPRG is to reinstate the bait stations on the Gloaming Hill side of the park working with Kim Broad, Biodiversity Advisor, Greater Wellington Regional Council (Greater Wellington).

4. Kārearea deaths in the park – Robyn Smith

During Level 3 lockdown, a pair of kārearea (falcon) were discovered dead under a power pole high up on the hill of Whitireia Park by a local resident Wendy Barry.

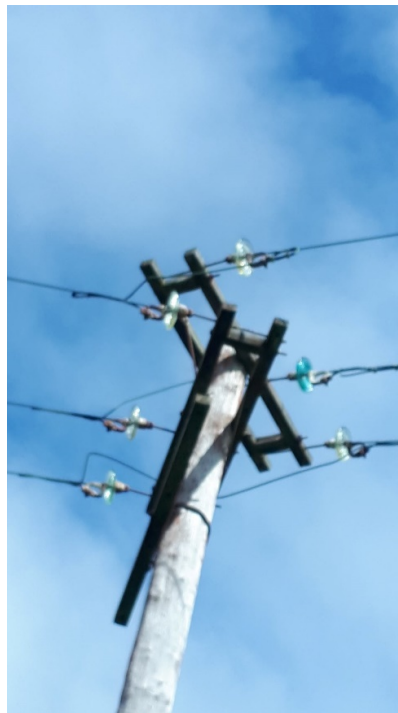
I contacted Radio New Zealand (RNZ) who forwarded my email to the lines company, Wellington Electricity, who were very concerned to hear that kārearea had been electrocuted. The power line comes across the harbour to Kaiua Bay then goes up to the top of the hills in the park and supplies power to the RNZ aerial and buildings and the northern side of Tītahi Bay.

Unfortunately, electrocution is a very common problem throughout Aotearoa/New Zealand because falcon like to perch on the high vantage points to find their prey and defend their territory from other kārearea and this power pole is the highest one up on the hill.

Wellington Line company engineers assessed the photos provided by Wendy and the location of the pole and have raised a job to install insulator caps on the top of all poles in the Park. These caps should prevent kārearea from being electrocuted in the future.

When the Wellington area moved to COVID-19 Level 2, I visited the site where the falcon died and was concerned that the jumper wires were also dangerous for future birds. I also contacted Wellington Electricity and they have also agreed to insulate those wires.

WPRG are very happy with the response by Wellington Electricity, and we hope a new pair of kārearea find the park and make it their home.



Dead male falcon and power pole where falcon were electrocuted

5. Planting – Chris Gibbons

There were good numbers of planters at the last two planting days for the season. The total number of plants in the ground this year is 1455.

There was a further public planting day on the hill up the valley behind Onehunga Bay. This site is an extension of the corridor from Onehunga Bay to the top of the hill and is very steep in places.

The Onepoto estuary planting day was held during COVID-19 Level 3 and was restricted in numbers. Thanks to Gary, Mobile Ranger Western, Greater Wellington for his assistance on the day. Gary also watered the plants prior to planting during COVID-19 Level 3 which was much appreciated.



Gary watering the plants during Covid level 3



Planting on the hillside above Onehunga Bay



Planters leaving Onepoto estuary planting site

6. Lizard monitoring – Angus Hulme-Moir

The lizard monitoring team, numbering 18 people monitored the escarpment for the entire week commencing 15 November 2021. On the first day 180 lizards were caught, measured and released which is double the number for any other monitoring day.



7. Enrichment planting- Robyn Smith

Additional Tūrepo (*Streblus banksii*) have been added to the area between the bush and wetland and around the dam above Onehunga Bay. This area was planted in 2006 and 2007 and is very well established. Tūrepo are dioecious (plants that have male and female flowers on separate plants) and therefore we need quite a few plants to ensure we get viable seed.

Robyn met up with Andrew Jinks from Porirua City Council nursery in early November to scout out suitable sites to plant Maire tawake, swamp maire, (*Syzygium maire*). Swamp maire was thought to be extinct in Porirua, however, Andrew discovered five swamp maire in a small gully adjacent to Bromley Road in Cannons Creek. The nursery has grown hundreds from seed this spring and will be donating around 30 to Whitireia Park when they are big enough to be planted out. Several sites have been chosen in and around the wetland at Onehunga Bay and once planted the trees will be GPSd and monitored. It will be many years before they are big enough to produce seed.

Additional plants of autetauranga, sand Pimelea, sand Carex (*Carex testacea*) and waiū atua (*Euphorbia glauca*) have been added to the back dunes at Kaiaua bay.



Sand Pimelea



Euphorbia glauca and sand Carex

8. Unapproved spraying and planting

WPRG is very concerned about unauthorised spraying and planting in the park which has not been approved by the Board and WPRG consider it should not be approved for the following reasons:

1. The spraying is opening up large areas for invasion by weed species such as pink ragwort (*Senecio glastifolius*), boneseed (*Chrysanthemoides monilifera subsp. monilifera*, karo (*Pittosporum crassifolium*) and gorse (*Ulex europaeus*).
2. The sprayed areas are extensive and create a fire risk.
3. The plant material being planted is not eco-sourced which is contrary to Greater Wellington's Parks policy.
4. The species being planted are not the right species to be planted in grasslands in Whitireia.
5. Some of the plantings have the potential to seed over onto the escarpment preventing natural regeneration of local species.
6. Some planting has been done near a *Leptinella nana* site. The species planted is the wrong type of plant to be in the *L. nana* habitat and *L. nana* would not be able to compete with this species.

9. Mowing extent in the park

WPRG are concerned at the extent of mowing in some areas of the park. Please refer to **Attachment 1**.

10. Proposed Porirua Council District Plan – Dr Rob Stratford

In November, WPRG presented a verbal submission supporting our written submission to the hearing commissioners for the proposed Porirua City Council District Plan. WPRG submitted on extending the Outstanding Natural features and Landscapes layer to include most of the Radio NZ land (except around their structures). We also submitted on the extent and boundaries of several of the proposed Significant Natural Areas (SNA) in the park.

As a result of our presentation, the hearing commissioners are investigating joining SNA 134 and 138 together to provide connectivity and to buffer the Te Onepoto stream.

11. Volunteer hours

	Trapping	Lizard project	Planting	Maintenance	Promotion Admin
September 2021 to November 2021	39	110	118	35	65

12. Coming up over the summer months

- Lizard monitoring
- Weeding along the top of the escarpment for boneseed and karo.
- More weed releasing of small plants in various sites.
- Seed collection in December and January.

13. Recommendations

That the Board:

1. **Receives** the report.
2. **Approves** funding of \$425.00 plus GST for Robyn Smith to obtain a GrowSafe certificate.

Refer to Attachment 1 for further information for recommendations 3 to 5 inclusive

3. **Approves** that mowing within Whitireia Park be further considered in consultation with representatives from Whitireia Park Restoration Group, Greater Wellington Parks Staff and the Board. (Please note that there is no provision for haymaking in the current Management Plan for Whitireia Park).
4. **Approves** that the Board agrees in conjunction with Greater Wellington staff that all wetlands be GPS'd and not mowed and that a 20 metre buffer zone around the perimeter of all wetlands should be observed if they fall within a mowing zone.
5. **Approves** that 4 Wheel Drive access be prevented to the small area of fence-line by the RNZ building by repairing the fence-line and either adding bollards or digging a ditch at the bottom of the bank, for the purpose of reducing fire risk and future damage to the wetlands.

Chris Gibbons, Rob Hughes, Robyn Smith, Edmund Stephen-Smith, Robert Stratford, Angus Hulme-Moir, Lisa Casasanto.

Whitireia Park Restoration Group Coordinators

Attachment 1

Mowing extent in Whitireia Park

The Whitireia Park Restoration Group (WPRG) is concerned about the extent of mowing in some parts of Whitireia Park, including a small area of wetland and regenerating scrub. WPRG recommend the extent of the mowing should be reduced in some areas to allow for the regeneration of native vegetation in the park.

Background

WPRG have been protecting and restoring ecological habitats in Whitireia Park since 2006. Volunteers have built up expertise and extensive experience in many aspects of ecological restoration. The work is challenging because of the geography and the weather; however we believe the biodiversity of the park is benefitting from our work.

Our work covers the following by our team of volunteers:

1. Planting identified high value areas (KNEs) using best practice principles; this is largely carried out on public planting day;
2. Extensive pest animal control carried out by a dedicated team of experienced trappers;
3. Proactively managing a nationally critically endangered plant, *Leptinella nana*, and its habitat;
4. Lizard protection and monitoring carried out by a team of experienced people;
5. Planting threatened and 'missing' species (locally appropriate) in intensively managed selected areas;
6. Plant releasing of selected areas;
7. Advocating for the biodiversity values of the park.

WPRG's work aligns with Objective 1, 2 and 3 of the Whitireia Park Management Plan 2020:

Objective 1: An improvement of native habitats through regeneration, active restoration and building 'green connections'.

Objective 2: Pest plants and animals are reduced to result in measurable ecosystem improvements.

Objective 3: Land management in the Onepoto catchment results in positive environmental contribution to the health of the Te Awarua-o-Porirua Harbour.

WPRG acknowledge that mowing is required to achieve two other objectives of the management plan:

Objective 4: Open space is managed for its recreation and amenity value, and to ensure preservation of archaeological sites. Management will give rise to this in an increased appreciation of the area.

Objective 5: Risks from fire and other human induced/influenced hazards to the park environment and visitors are reduced over time.

Over the past several years, the mowed areas have been extended and last year the mowing extent has resulted in several problems. These are outlined below in 'Proposed Solutions':

Area 1: Northern side of road near concrete pads

WPRG support an area between the concrete pads and the escarpment being mowed for recreation, however, over the past several years the mowed area has been continuously extended. The mowing is now very close to the planted areas on the top of the escarpment and the archaeological terraces are being negatively affected.

The extended mowed area prevents extended predator control to benefit lizard protection on the escarpment.

Last year the archaeological terraces were mowed perpendicular to the contours of the terraces instead of parallel with the terrace contours. This does not comply with best practice and if this continues it will breakdown the profile of each terrace. WPRG maintain that it is not necessary to mow the terraces or to mow close to the planted areas.

Proposed solution:

1. Parks and WPRG work together and agree on the area to be mowed to ensure planted areas are not mowed;
2. Boundaries of agreed mowing areas are GPS'd and provided to the mowing contractor;
3. Contractor does not mow outside the GPS'd area;
4. Mowing does not take place on archaeological sites.

Area 2: Onehunga Bay

WPRG support the mowing of areas behind Onehunga Bay for recreation, however, the mowed area has extended into the back-dune area. WPRG continues to add back-dune species to this area each year, with school children assisting with planting, as it is easily accessed. Plants were mowed by the stands of Pohutukawa trees a few years ago. After discussion with the ranger areas around the Pohutukawa have not been mowed since, however, the back-dune area on the seaward side of the track has been pushed into the back-dunes.

Proposed solution:

1. Parks and WPRG work together to agree on the area to be mowed to ensure planted areas and potential planting areas are not mowed;
2. Agreed mowing areas are GPS'd and provided to the mowing contractor/Parks staff;
3. Parks staff or contractors do not mow outside the GPS'd area.

Area 3: Onepoto stream headwaters

WPRG support that an area close to the road is mowed to mitigate fire risk, however, this area has been extended as far as the golf club on the eastern side of the gully.

WPRG suggest the mowed area is excessive as any grass fire in that area would either stop at the golf club boundary because most of the golf club areas are mowed, and/or the wetland areas.

Mowing has destroyed regenerating scrub. The mowing also destroyed an area of wetland identified as part of a Significant Natural Area (SNA) in the Proposed Porirua District Plan, which is outlined in red on the attached map. The Wellington region has only 2.7% of original wetland extent remaining and any loss of wetland in Whitireia is unacceptable. The wetlands in the head of the catchment have been recovering well and are becoming more diverse every year since grazing was stopped in the park in 2010.

Policy 6 of the National Policy Statement for Freshwater Management 2020 states: There is no further loss of extent of natural inland wetlands, their values are protected, and their restoration is promoted. Mowing any part of any wetlands in Whitireia Park is contrary to this policy.

In the past two years there has been an increase in motorbikes and 4WDs driving around the headwaters of the Onepoto stream. Considerable damage to part of a wetland was caused by a 4WD which became stuck in the wetland.

Proposed solution:

1. The mowed area is reduced significantly to an area beside the road which is the most vulnerable to fire to enable the natural regeneration of the land surrounding the headwaters of Onepoto stream and ensure planted areas and potential planting areas are not mowed;
2. Agreed mowing areas are GPS'd and provided to the mowing contractor/Parks staff;
3. Parks staff or contractors do not mow outside the GPS'd area;
4. Ensure 4 Wheel Drive vehicles cannot access the area.

Summary of Proposed Solutions:

1. All mowing areas are agreed to by Greater Wellington Parks staff and the Board and GPSd accordingly.
2. There appears to be confusion about why some areas are mowed. The recommended time to mow to reduce fire risk is early summer. In 2020 the park was commercially mowed and hay was made in April. Therefore, WPRG assume hay making is not to reduce the fire risk. Because hay making is not provided for in the Whitireia Park Management Plan it should not be permitted. Mowing to reduce the fire risk is permitted in the WP Management Plan however the extent of the mowing should be justified.
3. That Greater Wellington Parks staff and the Board agree that all wetlands be GPSd and not mowed. It is considered that a 20metre buffer around the perimeter of all wetlands should be observed and agreed to, if they fall within a mowing zone.

4. That 4 Wheel Drive vehicles should be prevented from accessing the upper Onepoto catchment by fixing the small area of fence-line by the RNZ building and either adding some bollards or digging a ditch at the bottom of the bank where 4 Wheel Drive vehicles are accessing the area. This will reduce the fire risk and prevent future damage to the wetlands.



Wetland mowed in 2020



SUBJECT Report for the Whitireia Park Board meeting 3 December 2021
AUTHOR: Jimmy Young , Board Office Manager
DATE OF MEETING: 3 December 2021
SUBJECT: **Meeting dates 2022**

1. Purpose

To propose meeting dates for the Whitireia Park Board for 2022.

2. Background

The following dates for 2022 are based on the frequency and timing of the Board meetings in 2021 and will be held at Titahi Bay Golf Club, Gloaming Hill, commencing at 9.30am, unless determined otherwise:

- Friday 25 February 2022
- Friday 6 May 2022
- Friday 26 August 2022
- Friday 2 December 2022

3. Recommendation

That the Board:

1. **Receives** the report.
2. **Resolves** its meeting schedule for 2022 as outlined in Section 2 of this report.

Report prepared by:

Jimmy Young
Board Office Manager